

SPECIFICATION SHEET

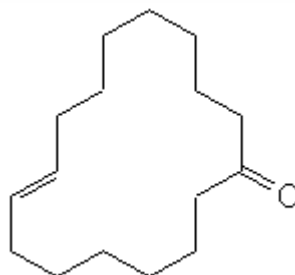
VERSION 1,00 **VERSION DATE** 14/04/23 **PRINT DATE** 29/04/24

PRODUCT GLOBANONE 50% DPG
APPLICATIONS Industrial raw material not intended for direct use.
IUPAC NAME CYCLOHEXADEC-8-EN-1-ONE, MIXTURE OF ISOMERS
SYNONYMS

FORMULA
MOLECULAR WEIGHT 0,00
CAS 3100-36-5

EINECS 401-700-2

TARIFF NUMBER 3302909000



REACH REGISTRATION NO. All the ingredients of the mixture have been registered or they are exempt from registration.

SPECIFICATIONS

ASPECT AT 20°C	CLEAR MOBILE LIQUID
COLOUR	COLORLESS TO PALE YELLOW
ODOUR	MUSK, DIFFUSIVE, BALSAMIC, TOBACCO
TASTE	
DENSITY AT 20°C (g / ml)	0,960 - 0,980
DENSITY 25/25	-
REFRACTIVE INDEX n_D20	1,4550 - 1,4750
REFRACTIVE INDEX n_D25	-
OPTICAL ROTATION (°)	/
BOILING POINT (°C)	-
MELTING POINT (°C)	-
FLASH POINT (°C)	101,00
ASSAY (% GC)	CONTAINS 50% BY WEIGHT GLOBANONE (CAS 3100-36-5).
ACID VALUE (mg KOH/g)	-
SOLUBILITY	PARTLY SOLUBLE IN WATER
VAPOUR PRESSURE	NOT DETERMINED
OTHER SOLUBILITIES	SOLUBLE IN ETHANOL

OTHER TECHNICAL DATA IT CONTAINS 50% OF DIPROPYLENEGLYCOL.

STABILITY AND STORAGE

KEEP IN TIGHTLY CLOSED CONTAINER IN A COOL AND DRY PLACE, PROTECTED FROM LIGHT. WHEN STORED FOR MORE THAN 24 MONTHS, QUALITY SHOULD BE CHECKED BEFORE USE.

WE BELIEVE THE ABOVE INFORMATION TO BE CORRECT BUT WE DO NOT PRESENT IT AS ALL INCLUSIVE AND AS SUCH SHOULD BE USED AS A GUIDE. IT IS THE SOLE RESPONSIBILITY OF THE RECEIVER OF OUR PRODUCT TO COMPLY WITH EXISTING REGULATIONS AND INSTRUCTIONS.