

SPECIFICATION SHEET

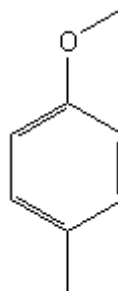
VERSION 5,00 **VERSION DATE** 22/09/22 **PRINT DATE** 05/05/24

PRODUCT PARA-CRESYL METHYL ETHER
APPLICATIONS Industrial raw material not intended for direct use.
IUPAC NAME 1-METHOXY-4-METHYLBENZENE
SYNONYMS 4-METHYLANISOLE, 4-METHOXYTOLUENE, O-METHYL-P-CRESOL

FORMULA C8 H10 O
MOLECULAR WEIGHT 122,00
CAS 104-93-8

EINECS 203-253-7

FEMA 2681
TARIFF NUMBER 2909309090



REACH REGISTRATION NO. On request. REACH and non-REACH material available for this product.

SPECIFICATIONS

ASPECT AT 20°C	CLEAR MOBILE LIQUID
COLOUR	COLORLESS TO PALE YELLOW
ODOUR	YLANG YLANG, LEATHER
TASTE	VANILLA, NUTS, PHENOLIC
DENSITY AT 20°C (g / ml)	0,968 - 0,971
DENSITY 25/25	-
REFRACTIVE INDEX nD20	1,5100 - 1,5130
REFRACTIVE INDEX nD25	-
OPTICAL ROTATION (°)	/
BOILING POINT (°C)	160 - 161 (1013 mbar)
MELTING POINT (°C)	
FLASH POINT (°C)	62,00
ASSAY (% GC)	> 99
ACID VALUE (mg KOH/g)	-
SOLUBILITY	0,40 g/l IN WATER (25°C)
VAPOUR PRESSURE	1,7 mbar (20°C)
OTHER SOLUBILITIES	SOLUBLE IN ETHANOL

OTHER TECHNICAL DATA

STABILITY AND STORAGE

KEEP IN TIGHTLY CLOSED CONTAINER IN A COOL AND DRY PLACE, PROTECTED FROM LIGHT. WHEN STORED FOR MORE THAN 18 MONTHS, QUALITY SHOULD BE CHECKED BEFORE USE.

WE BELIEVE THE ABOVE INFORMATION TO BE CORRECT BUT WE DO NOT PRESENT IT AS ALL INCLUSIVE AND AS SUCH SHOULD BE USED AS A GUIDE. IT IS THE SOLE RESPONSIBILITY OF THE RECEIVER OF OUR PRODUCT TO COMPLY WITH EXISTING REGULATIONS AND INSTRUCTIONS.

THIS PRODUCT HAS NOT BEEN FILTERED DUE TO TECHNICAL REASONS. WE RECOMMEND NOT TO USE IT UNLESS FILTERED WHEN USED AS A RAW MATERIAL IN FOOD INTENDED FOR FINAL CONSUMERS.