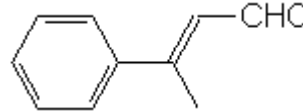


SPECIFICATION SHEET

VERSION 2,00 **VERSION DATE** 06/11/23 **PRINT DATE** 20/09/24

PRODUCT	METHYL CINNAMIC ALDEHYDE ALPHA ASIA
APPLICATIONS	Industrial raw material not intended for direct use.
IUPAC NAME	2-METHYL-3-PHENYL-2-PROPEN-1-AL
SYNONYMS	2-METHYL-3-PHENYL-2-PROPEN-1-AL/METHYLCINNAMALDEHYDE/CYPRINAL
FORMULA	C10 H10 O
MOLECULAR WEIGHT	146,00
CAS	101-39-3
EINECS	202-938-8
FEMA	2697
TARIFF NUMBER	2912290090



REACH REGISTRATION NO. On request. REACH and non-REACH material available for this product.

SPECIFICATIONS

ASPECT AT 20°C	CLEAR MOBILE LIQUID
COLOUR	YELLOW
ODOUR	SPICY, CINNAMON, SWEET, FLORAL
TASTE	SPICY, CINNAMON, SWEET, WOODY, HOT
DENSITY AT 20°C (g / ml)	1,033 - 1,041
DENSITY 25/25	-
REFRACTIVE INDEX nD20	1,6020 - 1,6070
REFRACTIVE INDEX nD25	-
OPTICAL ROTATION (°)	/
BOILING POINT (°C)	287°C (1 atm)
MELTING POINT (°C)	-
FLASH POINT (°C)	93,00
ASSAY (% GC)	SUM ALDEHYDES > 95
ACID VALUE (mg KOH/g)	< 5
SOLUBILITY	INSOLUBLE IN WATER
VAPOUR PRESSURE	0,017 mm Hg (25°C)
OTHER SOLUBILITIES	SOLUBLE IN ETHANOL

OTHER TECHNICAL DATA

STABILITY AND STORAGE

KEEP IN TIGHTLY CLOSED CONTAINER IN A COOL AND DRY PLACE, PROTECTED FROM LIGHT. WHEN STORED FOR MORE THAN 12 MONTHS, QUALITY SHOULD BE CHECKED BEFORE USE.
PURGE HEADSPACE WITH NITROGEN.

WE BELIEVE THE ABOVE INFORMATION TO BE CORRECT BUT WE DO NOT PRESENT IT AS ALL INCLUSIVE AND AS SUCH SHOULD BE USED AS A GUIDE. IT IS THE SOLE RESPONSIBILITY OF THE RECEIVER OF OUR PRODUCT TO COMPLY WITH EXISTING REGULATIONS AND INSTRUCTIONS.

THIS PRODUCT HAS NOT BEEN FILTERED DUE TO TECHNICAL REASONS. WE RECOMMEND NOT TO USE IT UNLESS FILTERED WHEN USED AS A RAW MATERIAL IN FOOD INTENDED FOR FINAL CONSUMERS.