

SPECIFICATION SHEET

VERSION 4,00 **VERSION DATE** 19/09/22 **PRINT DATE** 05/05/24

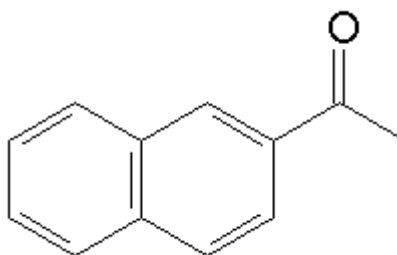
PRODUCT METHYL BETA NAPHTHYL KETONE
APPLICATIONS Industrial raw material not intended for direct use.
IUPAC NAME 1-(2-NAPHTALENYL)-ETHANONE
SYNONYMS 2-ACETONAPHTONE, ORANGER CRYSTALS

FORMULA C12 H10 O
MOLECULAR WEIGHT 170,00
CAS 93-08-3

EINECS 202-216-2

FEMA 2723
TARIFF NUMBER 2914390090

FOOD GRADE CERTIFICATE AVAILABLE ON REQUEST
REACH REGISTRATION NO. 01-2119935927-23



SPECIFICATIONS

ASPECT AT 20°C	CRYSTALLINE SOLID
COLOUR	WHITE TO PALE YELLOW
ODOUR	SWEET, NEROLI, ORANGE BLOSSOM
TASTE	SWEET, CITRUS, VANILLA, ORANGE, FRUITY
DENSITY AT 20°C (g / ml)	-
DENSITY 25/25	-
REFRACTIVE INDEX nD20	-
REFRACTIVE INDEX nD25	-
OPTICAL ROTATION (°)	/
BOILING POINT (°C)	300 (1013 mbar)
MELTING POINT (°C)	> 53
FLASH POINT (°C)	110,00
ASSAY (% GC)	> 99
ACID VALUE (mg KOH/g)	-
SOLUBILITY	109 mg/L IN WATER
VAPOUR PRESSURE	NOT DETERMINED
OTHER SOLUBILITIES	SOLUBLE IN ETHANOL

OTHER TECHNICAL DATA

STABILITY AND STORAGE

KEEP IN TIGHTLY CLOSED CONTAINER IN A COOL AND DRY PLACE, PROTECTED FROM LIGHT. WHEN STORED FOR MORE THAN 24 MONTHS, QUALITY SHOULD BE CHECKED BEFORE USE.

WE BELIEVE THE ABOVE INFORMATION TO BE CORRECT BUT WE DO NOT PRESENT IT AS ALL INCLUSIVE AND AS SUCH SHOULD BE USED AS A GUIDE. IT IS THE SOLE RESPONSIBILITY OF THE RECEIVER OF OUR PRODUCT TO COMPLY WITH EXISTING REGULATIONS AND INSTRUCTIONS.

THIS PRODUCT HAS NOT BEEN FILTERED DUE TO TECHNICAL REASONS. WE RECOMMEND NOT TO USE IT UNLESS FILTERED WHEN USED AS A RAW MATERIAL IN FOOD INTENDED FOR FINAL CONSUMERS.