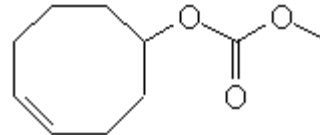


## SPECIFICATION SHEET

**VERSION** 4,00 **VERSION DATE** 01/03/21 **PRINT DATE** 07/03/21

**PRODUCT** VIOLIFF IFF  
**APPLICATIONS** Raw material for industrial use intended for the manufacture of fragrances.  
**IUPAC NAME** METHOXYCARBONYLOXYCYCLOOCT-4-ENE  
**SYNONYMS** VIOLET T

**FORMULA** C10 H16 O3  
**MOLECULAR WEIGHT** 184,20  
**CAS** 87731-18-8



**EINECS** 401-620-8

**TARIFF NUMBER** 2920901090  
**KOSHER CERTIFICATE** AVAILABLE ON REQUEST

**REACH REGISTRATION NO.** 01-0000015147-73

### SPECIFICATIONS

**ASPECT AT 20° C** CLEAR MOBILE LIQUID  
**COLOUR** COLORLESS TO PALE YELLOW  
**ODOUR** FLORAL, VIOLET, BANANA  
**TASTE**  
**DENSITY A 20° C (g / ml)** 1,056 - 1,064  
**DENSITY 25/25** 1,055 - 1,063  
**REFRACTIVE INDEX nD20** 1,4630 - 1,4690  
**REFRACTIVE INDEX nD25** -  
**OPTICAL ROTATION (°)** /  
**BOILING POINT (°C)** -  
**MELTING POINT (°C)** -  
**FLASH POINT (°C)** 94,00  
**ASSAY (% GC)** MAIN PEAK 65-75%  
**ACID VALUE (mg KOH/g)**  
**SOLUBILITY** INSOLUBLE IN WATER; SOLUBLE IN ETHANOL  
**VAPOUR PRESSURE** NOT DETERMINED  
**OTHER SOLUBILITIES** SOLUBLE IN ETHANOL

**OTHER TECHNICAL DATA** Peak 1 1-8%; Peak 2 7-20%; Peak 3 <7%; Peak 5 4-10%

### STABILITY AND STORAGE

KEEP IN TIGHTLY CLOSED CONTAINER IN A COOL AND DRY PLACE, PROTECTED FROM LIGHT. WHEN STORED FOR MORE THAN 24 MONTHS, QUALITY SHOULD BE CHECKED BEFORE USE.  
IT CONTAINS 0,1% OF TOCOPHEROL OR BHT.

WE BELIEVE THE ABOVE INFORMATION TO BE CORRECT BUT WE DO NOT PRESENT IT AS ALL INCLUSIVE AND AS SUCH SHOULD BE USED AS A GUIDE.  
IT IS THE SOLE RESPONSIBILITY OF THE RECEIVER OF OUR PRODUCT TO COMPLY WITH EXISTING REGULATIONS AND INSTRUCTIONS.