

SPECIFICATION SHEET

VERSION 1,00 **VERSION DATE** 19/09/22 **PRINT DATE** 18/04/24

PRODUCT MENTHYL ACETATE, NATURAL
APPLICATIONS Industrial raw material not intended for direct use.
IUPAC NAME 5-METHYL-2-(1-METHYLETHYL)-CYCLOHEXANOL ACETATE
SYNONYMS L-PARA-MENTH-3-YL ACETATE, 2-ISOPROPYL-5-METHYL-CYCLOHEXYL ACETATE

PLANT OF ORIGIN Mentha arvensis

PART OF THE PLANT Leaves

FORMULA C12 H22 O2

MOLECULAR WEIGHT 198,00

CAS 2623-23-6

CAS 2 16409-45-3

EINECS 220-076-0

EINECS 2 240-459-6

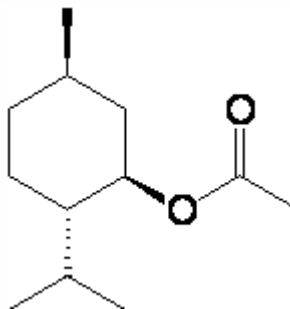
FEMA 2668

TARIFF NUMBER 2915390090

KOSHER CERTIFICATE AVAILABLE ON REQUEST

FOOD GRADE CERTIFICATE AVAILABLE ON REQUEST

REACH REGISTRATION NO. On request. REACH and non-REACH material available for this product.



SPECIFICATIONS

ASPECT AT 20°C	CLEAR MOBILE LIQUID	
COLOUR	COLORLESS TO PALE YELLOW	
ODOUR	FRESH, MINTY, ROSE-LIKE	
TASTE	FRESH	
DENSITY AT 20°C (g / ml)	0,921	- 0,931
DENSITY 25/25	-	
REFRACTIVE INDEX nD20	1,4410	- 1,4500
REFRACTIVE INDEX nD25	-	
OPTICAL ROTATION (°)	-75,00 / -70,00	
BOILING POINT (°C)	226 - 228	
MELTING POINT (°C)	-	
FLASH POINT (°C)	92,00	
ASSAY (% GC)	> 98,5	
ACID VALUE (mg KOH/g)	< 2	
SOLUBILITY	INSOLUBLE IN WATER	
VAPOUR PRESSURE	NOT DETERMINED	
OTHER SOLUBILITIES	SOLUBLE IN ETHANOL	

OTHER TECHNICAL DATA

STABILITY AND STORAGE

KEEP IN TIGHTLY CLOSED CONTAINER IN A COOL AND DRY PLACE, PROTECTED FROM LIGHT. WHEN STORED FOR MORE THAN 24 MONTHS, QUALITY SHOULD BE CHECKED BEFORE USE.

WE BELIEVE THE ABOVE INFORMATION TO BE CORRECT BUT WE DO NOT PRESENT IT AS ALL INCLUSIVE AND AS SUCH SHOULD BE USED AS A GUIDE. IT IS THE SOLE RESPONSIBILITY OF THE RECEIVER OF OUR PRODUCT TO COMPLY WITH EXISTING REGULATIONS AND INSTRUCTIONS.

THIS PRODUCT HAS NOT BEEN FILTERED DUE TO TECHNOLOGICAL REASONS. WE RECOMMEND NOT TO USE IT UNLESS FILTERED WHEN USED AS A RAW MATERIAL IN FOOD INTENDED FOR FINAL CONSUMERS.