

SPECIFICATION SHEET

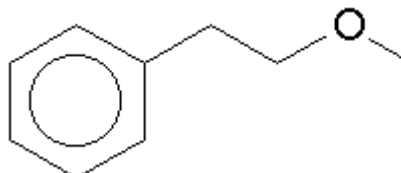
VERSION 5,00 **VERSION DATE** 30/09/21 **PRINT DATE** 03/05/24

PRODUCT PHENYL ETHYL METHYL ETHER
APPLICATIONS Industrial raw material not intended for direct use.
IUPAC NAME METHYL PHENETHYL ETHER
SYNONYMS METHYL PHENETHYL ETHER

FORMULA C₉ H₁₂ O
MOLECULAR WEIGHT 136,00
CAS 3558-60-9

EINECS 222-619-7

FEMA 3198
TARIFF NUMBER 2909309090



FOOD GRADE CERTIFICATE AVAILABLE ON REQUEST
REACH REGISTRATION NO. On request. REACH and non-REACH material available for this product.

SPECIFICATIONS

ASPECT AT 20°C	CLEAR MOBILE LIQUID
COLOUR	COLORLESS
ODOUR	ROSE, GREEN, ROUGH
TASTE	
DENSITY AT 20°C (g / ml)	0,947 - 0,952
DENSITY 25/25	0,945 - 0,951
REFRACTIVE INDEX n_{D20}	1,4970 - 1,5010
REFRACTIVE INDEX n_{D25}	-
OPTICAL ROTATION (°)	/
BOILING POINT (°C)	-
MELTING POINT (°C)	
FLASH POINT (°C)	66,00
ASSAY (% GC)	> 99; PHENYL ETHYL ALCOHOL < 1%
ACID VALUE (mg KOH/g)	< 1
SOLUBILITY	INSOLUBLE IN WATER
VAPOUR PRESSURE	NOT DETERMINED
OTHER SOLUBILITIES	SOLUBLE IN ETHANOL

OTHER TECHNICAL DATA PHENYLACETALDEHYDE < 0,15%

STABILITY AND STORAGE

KEEP IN TIGHTLY CLOSED CONTAINER IN A COOL AND DRY PLACE, PROTECTED FROM LIGHT. WHEN STORED FOR MORE THAN 24 MONTHS, QUALITY SHOULD BE CHECKED BEFORE USE.

WE BELIEVE THE ABOVE INFORMATION TO BE CORRECT BUT WE DO NOT PRESENT IT AS ALL INCLUSIVE AND AS SUCH SHOULD BE USED AS A GUIDE. IT IS THE SOLE RESPONSIBILITY OF THE RECEIVER OF OUR PRODUCT TO COMPLY WITH EXISTING REGULATIONS AND INSTRUCTIONS.

THIS PRODUCT HAS NOT BEEN FILTERED DUE TO TECHNICAL REASONS. WE RECOMMEND NOT TO USE IT UNLESS FILTERED WHEN USED AS A RAW MATERIAL IN FOOD INTENDED FOR FINAL CONSUMERS.