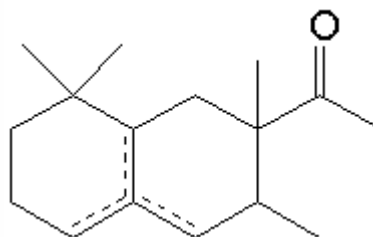


## SPECIFICATION SHEET

|                         |  |                     |          |                   |          |
|-------------------------|--|---------------------|----------|-------------------|----------|
| <b>VERSION</b>          | 2,00   | <b>VERSION DATE</b> | 18/11/21 | <b>PRINT DATE</b> | 25/04/24 |
| <b>PRODUCT</b>          | TIMBERSILK IFF   |                     |          |                   |          |
| <b>APPLICATIONS</b>     | Industrial raw material not intended for direct use.                       |                     |          |                   |          |
| <b>IUPAC NAME</b>       | 1-(1,2,3,4,5,6,7,8-OCTAHYDRO-2,3,8-TETRAMETHYL-2-NAPHTHALENYL)-ETHAN-1-ONE |                     |          |                   |          |
| <b>SYNONYMS</b>         |  |                     |          |                   |          |
| <b>FORMULA</b>          | C16 H26 O  |                     |          |                   |          |
| <b>MOLECULAR WEIGHT</b> | 234,40   |                     |          |                   |          |
| <b>CAS</b>              | 54464-57-2   |                     |          |                   |          |
| <b>CAS 2</b>            | 68155-66-8   |                     |          |                   |          |
| <b>EINECS</b>           | 259-174-3  |                     |          |                   |          |
| <b>EINECS 2</b>         | 268-978-3  |                     |          |                   |          |
| <b>TARIFF NUMBER</b>    | 3302909000   |                     |          |                   |          |



**REACH REGISTRATION NO.** All the ingredients of the mixture have been registered or they are exempt from registration.

## SPECIFICATIONS

|                                 |   |          |
|---------------------------------|---|----------|
| <b>ASPECT AT 20°C</b>           | SLIGHT VISCOUS CLEAR LIQUID                         |          |
| <b>COLOUR</b>                   | PALE YELLOW   |          |
| <b>ODOUR</b>                    | SMOOTH, WARM, WOODY, AMBER, SILKY                   |          |
| <b>TASTE</b>                    |   |          |
| <b>DENSITY AT 20°C (g / ml)</b> | 0,962   | - 0,968  |
| <b>DENSITY 25/25</b>            | 0,961   | - 0,967  |
| <b>REFRACTIVE INDEX nD20</b>    | 1,4970  | - 1,5010 |
| <b>REFRACTIVE INDEX nD25</b>    |   | -        |
| <b>OPTICAL ROTATION (°)</b>     |   | /        |
| <b>BOILING POINT (°C)</b>       | 290°C (typ. anal.)                                  |          |
| <b>MELTING POINT (°C)</b>       | -   |          |
| <b>FLASH POINT (°C)</b>         | 111,00  |          |
| <b>ASSAY (% GC)</b>             | BETA 30-45; ALPHA 18-26; DELTA 5,5-7,5; SECTION >89 |          |
| <b>ACID VALUE (mg KOH/g)</b>    |   |          |
| <b>SOLUBILITY</b>               | INSOLUBLE IN WATER                                  |          |
| <b>VAPOUR PRESSURE</b>          | NOT DETERMINED                                      |          |
| <b>OTHER SOLUBILITIES</b>       | SOLUBLE IN ETHANOL                                  |          |

**OTHER TECHNICAL DATA** CONTINUATION OF SPECIFICATIONS: GAMMA 13-20%; ISOPRECYCLEMONE <5%. SYNONIM FOR BETA ISOMER: ISOCYCLEMONE E.

## STABILITY AND STORAGE

KEEP IN TIGHTLY CLOSED CONTAINER IN A COOL AND DRY PLACE, PROTECTED FROM LIGHT. WHEN STORED FOR MORE THAN 24 MONTHS, QUALITY SHOULD BE CHECKED BEFORE USE.  
STABILIZED WITH 0,1% TOCOPHEROL. DO NOT REFRIGERATE OR FREEZE.

WE BELIEVE THE ABOVE INFORMATION TO BE CORRECT BUT WE DO NOT PRESENT IT AS ALL INCLUSIVE AND AS SUCH SHOULD BE USED AS A GUIDE.  
IT IS THE SOLE RESPONSIBILITY OF THE RECEIVER OF OUR PRODUCT TO COMPLY WITH EXISTING REGULATIONS AND INSTRUCTIONS.