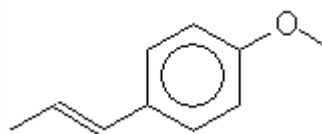


SPECIFICATION SHEET

VERSION	5,00	VERSION DATE	11/05/22	PRINT DATE	24/04/24
PRODUCT	ANETHOLE NATURAL (EX STAR ANISE)				
APPLICATIONS	Industrial raw material not intended for direct use.				
IUPAC NAME	1-METHOXY-4-[(1E)-1-PROPEN-1-YL]BENZENE				
SYNONYMS	trans-ANETHOLE, trans-p-ANETHOLE				
PLANT OF ORIGIN	Illicium verum Hook				
PART OF THE PLANT	SEEDS AND LEAVES				
FORMULA	C ₁₀ H ₁₂ O				
MOLECULAR WEIGHT	148,00				
CAS	4180-23-8				
CAS 2	104-46-1				
EINECS	224-052-0				
EINECS 2	203-205-5				
FEMA	2086				
TARIFF NUMBER	2909309090				
FOOD GRADE CERTIFICATE	AVAILABLE ON REQUEST				
REACH REGISTRATION NO.	On request. REACH and non-REACH material available for this product.				



SPECIFICATIONS

ASPECT AT 20°C	LIQUID/SOLID	
COLOUR	COLOURLESS	
ODOUR	ANISE LIKE, SWEET	
TASTE	SWEET	
DENSITY AT 20°C (g / ml)	0,980	- 0,990
DENSITY 25/25	0,983	- 0,988
REFRACTIVE INDEX n_D20	1,5600	- 1,5620
REFRACTIVE INDEX n_D25	-	
OPTICAL ROTATION (°)	-0,15	/ 0,15
BOILING POINT (°C)	234 - 237	
MELTING POINT (°C)	> 21,2	
FLASH POINT (°C)	90,00	
ASSAY (% GC)	TRANS-ANETHOLE>99%; CIS-ANETHOLE<0,15%	
ACID VALUE (mg KOH/g)	-	
SOLUBILITY	NEARLY INSOLUBLE IN WATER	
VAPOUR PRESSURE	NOT DETERMINED	
OTHER SOLUBILITIES	1:2 V/V ETHANOL 96. MISCIBLE IN CHLOROFORM, ETHER.	

OTHER TECHNICAL DATA

STABILITY AND STORAGE

KEEP IN TIGHTLY CLOSED CONTAINER IN A COOL AND DRY PLACE, PROTECTED FROM LIGHT. WHEN STORED FOR MORE THAN 24 MONTHS, QUALITY SHOULD BE CHECKED BEFORE USE.
PURGE HEADSPACE WITH NITROGEN.

WE BELIEVE THE ABOVE INFORMATION TO BE CORRECT BUT WE DO NOT PRESENT IT AS ALL INCLUSIVE AND AS SUCH SHOULD BE USED AS A GUIDE.
IT IS THE SOLE RESPONSIBILITY OF THE RECEIVER OF OUR PRODUCT TO COMPLY WITH EXISTING REGULATIONS AND INSTRUCTIONS.

THIS PRODUCT HAS NOT BEEN FILTERED DUE TO TECHNICAL REASONS. WE RECOMMEND NOT TO USE IT UNLESS FILTERED WHEN USED AS A RAW MATERIAL IN FOOD INTENDED FOR FINAL CONSUMERS.