

SPECIFICATION SHEET

VERSION 2,00 **VERSION DATE** 19/09/22 **PRINT DATE** 28/04/24

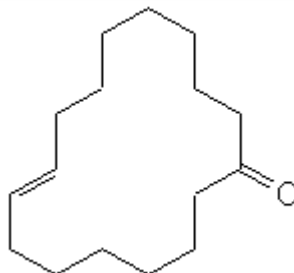
PRODUCT GLOBANONE 100% SYMRISE
APPLICATIONS Industrial raw material not intended for direct use.
IUPAC NAME CIS, TRANS-CYCLOHEXADEC-8-EN-1-ONE
SYNONYMS

FORMULA C16 H28 O
MOLECULAR WEIGHT 236,44
CAS 3100-36-5

EINECS 401-700-2

FEMA -
TARIFF NUMBER 2914290020
KOSHER CERTIFICATE AVAILABLE ON REQUEST

REACH REGISTRATION NO. 01-0000015154-78



SPECIFICATIONS

ASPECT AT 20°C	LIQUID / SOLID
COLOUR	COLORLESS TO PALE YELLOW
ODOUR	MUSK, DIFFUSIVE, BALSAMIC, TOBACCO
TASTE	
DENSITY AT 20°C (g / ml)	-
DENSITY 25/25	-
REFRACTIVE INDEX nD20	-
REFRACTIVE INDEX nD25	-
OPTICAL ROTATION (°)	/
BOILING POINT (°C)	-
MELTING POINT (°C)	CA. 33°C
FLASH POINT (°C)	101,00
ASSAY (% GC)	SUM > 97
ACID VALUE (mg KOH/g)	-
SOLUBILITY	INSOLUBLE IN WATER
VAPOUR PRESSURE	< 1 kPa (50°C, CALCULATED)
OTHER SOLUBILITIES	SOLUBLE IN ETHANOL

OTHER TECHNICAL DATA

STABILITY AND STORAGE

KEEP IN TIGHTLY CLOSED CONTAINER IN A COOL AND DRY PLACE, PROTECTED FROM LIGHT. WHEN STORED FOR MORE THAN 24 MONTHS, QUALITY SHOULD BE CHECKED BEFORE USE.

WE BELIEVE THE ABOVE INFORMATION TO BE CORRECT BUT WE DO NOT PRESENT IT AS ALL INCLUSIVE AND AS SUCH SHOULD BE USED AS A GUIDE. IT IS THE SOLE RESPONSIBILITY OF THE RECEIVER OF OUR PRODUCT TO COMPLY WITH EXISTING REGULATIONS AND INSTRUCTIONS.