

## SPECIFICATION SHEET

**VERSION** 1,00 **VERSION DATE** 19/09/22 **PRINT DATE** 03/11/24

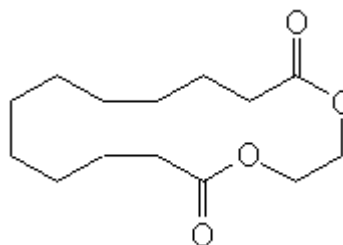
**PRODUCT** ZENOLIDE IFF  
**APPLICATIONS** Industrial raw material not intended for direct use.  
**IUPAC NAME** 1,4-DIOXACYCLOHEXADECANE-5,16-DIONE  
**SYNONYMS** MUSK 144,MUSK C14,MC-4,ETHYLENE DODECANEDIOATE

**FORMULA** C14 H24 O4  
**MOLECULAR WEIGHT** 256,34  
**CAS** 54982-83-1

**EINECS** 259-423-6

**TARIFF NUMBER** 2932209090  
**KOSHER CERTIFICATE** AVAILABLE ON REQUEST

**REACH REGISTRATION NO.** 01-2119524000-64



## SPECIFICATIONS

|                                 |                               |
|---------------------------------|-------------------------------|
| <b>ASPECT AT 20°C</b>           | LIQUID / SOLID                |
| <b>COLOUR</b>                   | COLORLESS                     |
| <b>ODOUR</b>                    | MUSK,ANIMAL,SOFT,RED FRUIT    |
| <b>TASTE</b>                    |                               |
| <b>DENSITY AT 20°C (g / ml)</b> | 1,054 - 1,062                 |
| <b>DENSITY 25/25</b>            | 1,053 - 1,061                 |
| <b>REFRACTIVE INDEX nD20</b>    | 1,4700 - 1,4740               |
| <b>REFRACTIVE INDEX nD25</b>    | -                             |
| <b>OPTICAL ROTATION (°)</b>     | /                             |
| <b>BOILING POINT (°C)</b>       | -                             |
| <b>MELTING POINT (°C)</b>       | CA. 16-19°C                   |
| <b>FLASH POINT (°C)</b>         | 185,00                        |
| <b>ASSAY (% GC)</b>             | MAJOR PEAK > 95%, PEAK 2 < 3% |
| <b>ACID VALUE (mg KOH/g)</b>    | < 0,5                         |
| <b>SOLUBILITY</b>               | INSOLUBLE IN WATER            |
| <b>VAPOUR PRESSURE</b>          | NOT DETERMINED                |
| <b>OTHER SOLUBILITIES</b>       | SOLUBLE IN ETHANOL            |

### OTHER TECHNICAL DATA

## STABILITY AND STORAGE

KEEP IN TIGHTLY CLOSED CONTAINER IN A COOL AND DRY PLACE, PROTECTED FROM LIGHT. WHEN STORED FOR MORE THAN 36 MONTHS, QUALITY SHOULD BE CHECKED BEFORE USE. ASSURE COMPLETE MELTING BEFORE USE. HEAT GENTLY IF NECESSARY.

WE BELIEVE THE ABOVE INFORMATION TO BE CORRECT BUT WE DO NOT PRESENT IT AS ALL INCLUSIVE AND AS SUCH SHOULD BE USED AS A GUIDE. IT IS THE SOLE RESPONSIBILITY OF THE RECEIVER OF OUR PRODUCT TO COMPLY WITH EXISTING REGULATIONS AND INSTRUCTIONS.