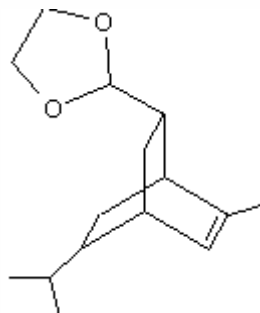


SPECIFICATION SHEET

VERSION 1,00 **VERSION DATE** 19/09/22 **PRINT DATE** 29/04/24

PRODUCT	GLYCOACETAL
APPLICATIONS	Industrial raw material not intended for direct use.
IUPAC NAME	2(6METHYL8(1METHYLETHYL)BICYCLO[2.2.2]OCT5EN2YL)1,3DIOXOLANE
SYNONYMS	GLYCOACETAL 236, GLYCOLIERRAL, IVY DIOXOLANE
FORMULA	C15 H24 O2
MOLECULAR WEIGHT	236,30
CAS	68901-32-6
EINECS	272-669-9
FEMA	-
TARIFF NUMBER	2932990090



REACH REGISTRATION NO. 01-2120118326-63

SPECIFICATIONS

ASPECT AT 20°C	CLEAR MOBILE LIQUID
COLOUR	COLORLESS TO PALE YELLOW
ODOUR	SOFT, ROSY, CRUSHED IVY LEAVES
TASTE	
DENSITY AT 20°C (g / ml)	1,009 - 1,014
DENSITY 25/25	-
REFRACTIVE INDEX nD20	1,4880 - 1,4930
REFRACTIVE INDEX nD25	-
OPTICAL ROTATION (°)	/
BOILING POINT (°C)	-
MELTING POINT (°C)	-
FLASH POINT (°C)	140,00
ASSAY (% GC)	SUM OF ISOMERS > 98
ACID VALUE (mg KOH/g)	-
SOLUBILITY	INSOLUBLE IN WATER
VAPOUR PRESSURE	NOT DETERMINED
OTHER SOLUBILITIES	SOLUBLE IN ETHANOL

OTHER TECHNICAL DATA

IT HAS NOT BEEN REPORTED FOUND IN NATURE. IN PERFUMERY, THANKS TO ITS TENACITY, IT IS USED IN FRESH AND WOODY COMPOSITIONS. IT ALSO BLENDS WELL WITH LEMON NOTES.

STABILITY AND STORAGE

KEEP IN TIGHTLY CLOSED CONTAINER IN A COOL AND DRY PLACE, PROTECTED FROM LIGHT. WHEN STORED FOR MORE THAN 24 MONTHS, QUALITY SHOULD BE CHECKED BEFORE USE.

WE BELIEVE THE ABOVE INFORMATION TO BE CORRECT BUT WE DO NOT PRESENT IT AS ALL INCLUSIVE AND AS SUCH SHOULD BE USED AS A GUIDE. IT IS THE SOLE RESPONSIBILITY OF THE RECEIVER OF OUR PRODUCT TO COMPLY WITH EXISTING REGULATIONS AND INSTRUCTIONS.