

SPECIFICATION SHEET

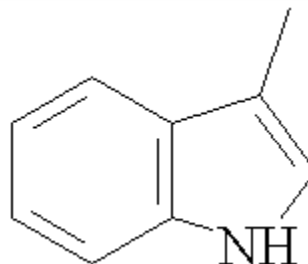
VERSION 1,00 **VERSION DATE** 17/03/22 **PRINT DATE** 04/05/24

PRODUCT SKATOLE
APPLICATIONS Industrial raw material not intended for direct use.
IUPAC NAME 3-METHYLINDOLE
SYNONYMS 3-METHYLINDOLE, BETA-METHYLINDOLE, SKATOLE

FORMULA C9 H9 N
MOLECULAR WEIGHT 131,17
CAS 83-34-1

EINECS 201-471-7

FEMA 3019
TARIFF NUMBER 2933992000



REACH REGISTRATION NO. On request. REACH and non-REACH material available for this product.

SPECIFICATIONS

| | |
|---|------------------------------------|
| ASPECT AT 20°C | SOLID (CRYSTALS OR POWDER) |
| COLOUR | WHITE |
| ODOUR | CIVET, POTENT, ANIMALIC, TENACIOUS |
| TASTE | |
| DENSITY AT 20°C (g / ml) | - |
| DENSITY 25/25 | - |
| REFRACTIVE INDEX n_D20 | - |
| REFRACTIVE INDEX n_D25 | - |
| OPTICAL ROTATION (°) | / |
| BOILING POINT (°C) | 265 - 266 (755 mm Hg) |
| MELTING POINT (°C) | 93 - 97 |
| FLASH POINT (°C) | 101,00 |
| ASSAY (% GC) | > 99 |
| ACID VALUE (mg KOH/g) | - |
| SOLUBILITY | INSOLUBLE IN WATER |
| VAPOUR PRESSURE | NOT DETERMINED |
| OTHER SOLUBILITIES | SOLUBLE IN ETHANOL |

OTHER TECHNICAL DATA

STABILITY AND STORAGE

KEEP IN TIGHTLY CLOSED CONTAINER IN A COOL AND DRY PLACE, PROTECTED FROM LIGHT. WHEN STORED FOR MORE THAN 24 MONTHS, QUALITY SHOULD BE CHECKED BEFORE USE.
IT BECOMES RED OR BROWN UPON EXPOSURE TO AIR AND LIGHT.

WE BELIEVE THE ABOVE INFORMATION TO BE CORRECT BUT WE DO NOT PRESENT IT AS ALL INCLUSIVE AND AS SUCH SHOULD BE USED AS A GUIDE.
IT IS THE SOLE RESPONSIBILITY OF THE RECEIVER OF OUR PRODUCT TO COMPLY WITH EXISTING REGULATIONS AND INSTRUCTIONS.

THIS PRODUCT HAS NOT BEEN FILTERED DUE TO TECHNICAL REASONS. WE RECOMMEND NOT TO USE IT UNLESS FILTERED WHEN USED AS A RAW MATERIAL IN FOOD INTENDED FOR FINAL CONSUMERS.