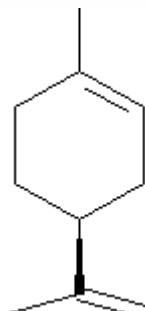


SPECIFICATION SHEET

VERSION	4,00	VERSION DATE	19/09/22	PRINT DATE	24/04/24
PRODUCT	LIMONENE-D RECTIFIED NATURAL				
APPLICATIONS	Industrial raw material not intended for direct use.				
IUPAC NAME	D-LIMONENE				
SYNONYMS					
PLANT OF ORIGIN	Citrus sinensis				
PART OF THE PLANT	FRUIT PEELS				
FORMULA	C ₁₀ H ₁₆				
MOLECULAR WEIGHT	136,00				
CAS	5989-27-5				
EINECS	227-813-5				
FEMA	2633				
TARIFF NUMBER	2902190000				
FOOD GRADE CERTIFICATE	AVAILABLE ON REQUEST				
REACH REGISTRATION NO.	01-2119529223-47				



SPECIFICATIONS

ASPECT AT 20°C	CLEAR MOBILE LIQUID		
COLOUR	COLORLESS TO PALE YELLOW		
ODOUR	CITRUS, SMOOTH		
TASTE			
DENSITY AT 20°C (g / ml)	0,838	-	0,880
DENSITY 25/25	-		
REFRACTIVE INDEX n_D20	1,4700	-	1,4750
REFRACTIVE INDEX n_D25	-		
OPTICAL ROTATION (°)	90,00	/	105,00
BOILING POINT (°C)	178		
MELTING POINT (°C)	-97 APPROX.		
FLASH POINT (°C)	53,00		
ASSAY (% GC)	> 98		
ACID VALUE (mg KOH/g)	-		
SOLUBILITY	INSOLUBLE IN WATER		
VAPOUR PRESSURE	NOT DETERMINED		
OTHER SOLUBILITIES	SOLUBLE IN ETHANOL. SOLUBILITY 1/6 v/v IN ETHANOL 90° AT 25°C		
OTHER TECHNICAL DATA	PEROXIDE INDEX < 20 mmol/L		

STABILITY AND STORAGE

KEEP IN TIGHTLY CLOSED CONTAINER IN A COOL AND DRY PLACE, PROTECTED FROM LIGHT. WHEN STORED FOR MORE THAN 24 MONTHS, QUALITY SHOULD BE CHECKED BEFORE USE.
PURGE HEADSPACE WITH NITROGEN.

WE BELIEVE THE ABOVE INFORMATION TO BE CORRECT BUT WE DO NOT PRESENT IT AS ALL INCLUSIVE AND AS SUCH SHOULD BE USED AS A GUIDE.
IT IS THE SOLE RESPONSIBILITY OF THE RECEIVER OF OUR PRODUCT TO COMPLY WITH EXISTING REGULATIONS AND INSTRUCTIONS.

THIS PRODUCT HAS NOT BEEN FILTERED DUE TO TECHNICAL REASONS. WE RECOMMEND NOT TO USE IT UNLESS FILTERED WHEN USED AS A RAW MATERIAL IN FOOD INTENDED FOR FINAL CONSUMERS.