

SPECIFICATION SHEET

VERSION 1,00 **VERSION DATE** 29/01/19 **PRINT DATE** 01/12/20

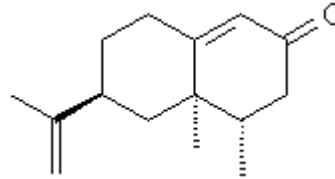
PRODUCT NATURAL NOOTKATONE 50-60% IFF
APPLICATIONS Raw material for industrial use intended for the manufacture of flavours.
IUPAC NAME 5,6-DIMETHYL-8-ISO-PROPENYLBICYCLO-[4.4.0]-1-DECEN-3-ONE
SYNONYMS

PLANT OF ORIGIN
PART OF THE PLANT

FORMULA C₁₅ H₂₂ O
MOLECULAR WEIGHT 218,34
CAS 4674-50-4

EINECS 225-124-4

FEMA 4941
TARIFF NUMBER 2914290090
KOSHER CERTIFICATE AVAILABLE ON REQUEST



REACH REGISTRATION NO. Exempt from registration (according to article 2.5 of REACH)

SPECIFICATIONS

ASPECT AT 20° C	CLEAR MOBILE LIQUID/SOLID
COLOUR	YELLOW
ODOUR	GRAPEFRUIT, CITRUS, WOODY
TASTE	
DENSITY A 20° C (g / ml)	0,960 - 1,002
DENSITY 25/25	-
REFRACTIVE INDEX n_D20	1,5030 - 1,5220
REFRACTIVE INDEX n_D25	-
OPTICAL ROTATION (°)	70,00 / 120,00
BOILING POINT (°C)	140°C (0,5-1,0 mm)
MELTING POINT (°C)	-
FLASH POINT (°C)	110,00
ASSAY (% GC)	> 50
ACID VALUE (mg KOH/g)	
SOLUBILITY	INSOLUBLE IN WATER
VAPOUR PRESSURE	NOT DETERMINED
OTHER SOLUBILITIES	SOLUBLE IN ETHANOL

OTHER TECHNICAL DATA

STABILITY AND STORAGE

KEEP IN TIGHTLY CLOSED CONTAINER IN A COOL AND DRY PLACE, PROTECTED FROM LIGHT. WHEN STORED FOR MORE THAN 24 MONTHS, QUALITY SHOULD BE CHECKED BEFORE USE.
MELT AND MIX BEFORE SAMPLING OR USE. KEEP REFRIGERATED.

WE BELIEVE THE ABOVE INFORMATION TO BE CORRECT BUT WE DO NOT PRESENT IT AS ALL INCLUSIVE AND AS SUCH SHOULD BE USED AS A GUIDE. IT IS THE SOLE RESPONSIBILITY OF THE RECEIVER OF OUR PRODUCT TO COMPLY WITH EXISTING REGULATIONS AND INSTRUCTIONS.

THIS PRODUCT HAS NOT BEEN FILTERED DUE TO TECHNOLOGICAL REASONS. WE RECOMMEND NOT TO USE IT UNLESS FILTERED WHEN USED AS A RAW MATERIAL IN FOOD INTENDED FOR FINAL CONSUMERS.