

SPECIFICATION SHEET

VERSION 1,00 **VERSION DATE** 19/09/22 **PRINT DATE** 18/05/24

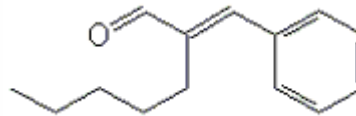
PRODUCT AMYL CINNAMIC ALDEHYDE ALPHA NATURAL EU BESTALLY
APPLICATIONS Industrial raw material not intended for direct use.
IUPAC NAME AMYL CINNAMIC ALDEHYDE, ALPHA
SYNONYMS

PLANT OF ORIGIN
PART OF THE PLANT

FORMULA C14 H18 O
MOLECULAR WEIGHT 202,00
CAS 122-40-7

EINECS 204-541-5

FEMA 2061
TARIFF NUMBER 2912290090



FOOD GRADE CERTIFICATE AVAILABLE ON REQUEST
REACH REGISTRATION NO. Exempt from registration (imported/manufactured < 1 ton/year)

SPECIFICATIONS

ASPECT AT 20°C	CLEAR MOBILE LIQUID
COLOUR	YELLOW
ODOUR	FLORAL WITH JASMIN CHARACTER, SPICY
TASTE	
DENSITY AT 20°C (g / ml)	0,965 - 0,971
DENSITY 25/25	-
REFRACTIVE INDEX nD20	1,5540 - 1,5590
REFRACTIVE INDEX nD25	-
OPTICAL ROTATION (°)	/
BOILING POINT (°C)	287-290°C
MELTING POINT (°C)	
FLASH POINT (°C)	143,00
ASSAY (% GC)	SUM ISOMERS >98%
ACID VALUE (mg KOH/g)	< 5
SOLUBILITY	8,6 g/l
VAPOUR PRESSURE	0,1 mm Hg (50°C)
OTHER SOLUBILITIES	1:5 in Ethanol 80°

OTHER TECHNICAL DATA

STABILITY AND STORAGE

KEEP IN TIGHTLY CLOSED CONTAINER IN A COOL AND DRY PLACE, PROTECTED FROM LIGHT. WHEN STORED FOR MORE THAN 24 MONTHS, QUALITY SHOULD BE CHECKED BEFORE USE. PURGE HEADSPACE WITH NITROGEN.

WE BELIEVE THE ABOVE INFORMATION TO BE CORRECT BUT WE DO NOT PRESENT IT AS ALL INCLUSIVE AND AS SUCH SHOULD BE USED AS A GUIDE. IT IS THE SOLE RESPONSIBILITY OF THE RECEIVER OF OUR PRODUCT TO COMPLY WITH EXISTING REGULATIONS AND INSTRUCTIONS.

THIS PRODUCT HAS NOT BEEN FILTERED DUE TO TECHNICAL REASONS. WE RECOMMEND NOT TO USE IT UNLESS FILTERED WHEN USED AS A RAW MATERIAL IN FOOD INTENDED FOR FINAL CONSUMERS.