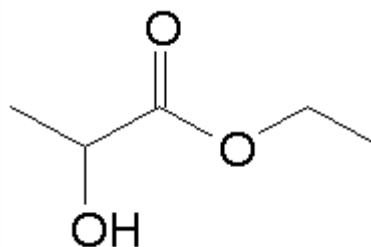


SPECIFICATION SHEET

VERSION 2,00 **VERSION DATE** 14/06/23 **PRINT DATE** 27/04/24

PRODUCT	ETHYL LACTATE EXTRA
APPLICATIONS	Industrial raw material not intended for direct use.
IUPAC NAME	ETHYL 2-HYDROXYPROPIONATE
SYNONYMS	ETHYL 2-HYDROXYPROPIONATE
FORMULA	C5 H10 O3
MOLECULAR WEIGHT	118,00
CAS	687-47-8
CAS 2	97-64-3
EINECS	211-694-1
EINECS 2	202-598-0
FEMA	2440
TARIFF NUMBER	2918110000
KOSHER CERTIFICATE	AVAILABLE ON REQUEST
FOOD GRADE CERTIFICATE	AVAILABLE ON REQUEST
REACH REGISTRATION NO.	01-2119516234-49



SPECIFICATIONS

ASPECT AT 20°C	CLEAR MOBILE LIQUID
COLOUR	COLORLESS
ODOUR	ETHEREAL-BUTTERY, CHEESY, FRUITY
TASTE	MILD, FRUITY-ETHEREAL, BUTTERY
DENSITY AT 20°C (g / ml)	1,026 - 1,039
DENSITY 25/25	-
REFRACTIVE INDEX nD20	1,4090 - 1,4190
REFRACTIVE INDEX nD25	-
OPTICAL ROTATION (°)	/
BOILING POINT (°C)	145 - 160
MELTING POINT (°C)	-3
FLASH POINT (°C)	59,00
ASSAY (% GC)	> 98,5
ACID VALUE (mg KOH/g)	< 0.1%
SOLUBILITY	MISCIBLE WITH WATER
VAPOUR PRESSURE	NOT DETERMINED
OTHER SOLUBILITIES	SOLUBLE IN ETHANOL

OTHER TECHNICAL DATA

STABILITY AND STORAGE

KEEP IN TIGHTLY CLOSED CONTAINER IN A COOL AND DRY PLACE, PROTECTED FROM LIGHT. WHEN STORED FOR MORE THAN 24 MONTHS, QUALITY SHOULD BE CHECKED BEFORE USE.
PLASTIC DRUM IS RECOMMENDED.

WE BELIEVE THE ABOVE INFORMATION TO BE CORRECT BUT WE DO NOT PRESENT IT AS ALL INCLUSIVE AND AS SUCH SHOULD BE USED AS A GUIDE.
IT IS THE SOLE RESPONSIBILITY OF THE RECEIVER OF OUR PRODUCT TO COMPLY WITH EXISTING REGULATIONS AND INSTRUCTIONS.

THIS PRODUCT HAS NOT BEEN FILTERED DUE TO TECHNICAL REASONS. WE RECOMMEND NOT TO USE IT UNLESS FILTERED WHEN USED AS A RAW MATERIAL IN FOOD INTENDED FOR FINAL CONSUMERS.