

SPECIFICATION SHEET

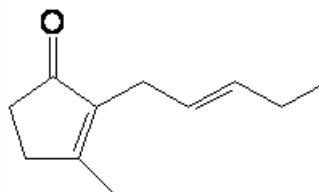
VERSION 1,00 **VERSION DATE** 19/09/22 **PRINT DATE** 06/05/24

PRODUCT CIS-JASMONE CHINA
APPLICATIONS Industrial raw material not intended for direct use.
IUPAC NAME 3-METIL-2-(2-PENTENIL)-2-CICLOPENTEN-1-ONA
SYNONYMS CIS-JASMONE; 3-METHYL-2((2Z)-PENTENYL)-2-CYCLOPENTEN-1-ONE

FORMULA C11 H16 O
MOLECULAR WEIGHT 164,25
CAS 488-10-8

EINECS 207-668-4

FEMA 3196
TARIFF NUMBER 2914290090



FOOD GRADE CERTIFICATE AVAILABLE ON REQUEST
REACH REGISTRATION NO. On request. REACH and non-REACH material available for this product.

SPECIFICATIONS

| | |
|---------------------------------|-------------------------------------|
| ASPECT AT 20°C | CLEAR MOBILE LIQUID |
| COLOUR | COLORLESS TO YELLOW |
| ODOUR | JASMIN, CELERY, FRESH, GREEN, SPICY |
| TASTE | |
| DENSITY AT 20°C (g / ml) | 0,939 - 0,943 |
| DENSITY 25/25 | - |
| REFRACTIVE INDEX nD20 | 1,4970 - 1,5010 |
| REFRACTIVE INDEX nD25 | - |
| OPTICAL ROTATION (°) | / |
| BOILING POINT (°C) | 248°C; 135°C (12 mm Hg) |
| MELTING POINT (°C) | |
| FLASH POINT (°C) | 127,00 |
| ASSAY (% GC) | CIS > 90; CIS + TRANS > 98 |
| ACID VALUE (mg KOH/g) | < 2 |
| SOLUBILITY | SLIGHTLY SOLUBLE IN WATER |
| VAPOUR PRESSURE | 0,01 mm Hg (20°C) |
| OTHER SOLUBILITIES | SOLUBLE IN ETHANOL |

OTHER TECHNICAL DATA

STABILITY AND STORAGE

KEEP IN TIGHTLY CLOSED CONTAINER IN A COOL AND DRY PLACE, PROTECTED FROM LIGHT. WHEN STORED FOR MORE THAN 24 MONTHS, QUALITY SHOULD BE CHECKED BEFORE USE.
 IT DOES NOT CONTAIN ANTIOXIDANTS

WE BELIEVE THE ABOVE INFORMATION TO BE CORRECT BUT WE DO NOT PRESENT IT AS ALL INCLUSIVE AND AS SUCH SHOULD BE USED AS A GUIDE.
 IT IS THE SOLE RESPONSIBILITY OF THE RECEIVER OF OUR PRODUCT TO COMPLY WITH EXISTING REGULATIONS AND INSTRUCTIONS.

THIS PRODUCT HAS NOT BEEN FILTERED DUE TO TECHNICAL REASONS. WE RECOMMEND NOT TO USE IT UNLESS FILTERED WHEN USED AS A RAW MATERIAL IN FOOD INTENDED FOR FINAL CONSUMERS.