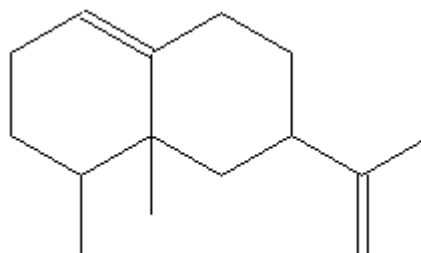


SPECIFICATION SHEET

VERSION	2,00	VERSION DATE	15/01/20	PRINT DATE	25/04/24
PRODUCT	VALENCENE NATURAL 75% BIOTECH				
APPLICATIONS	Industrial raw material not intended for direct use.				
IUPAC NAME	5,6-DIMETHYL-8-ISOPROPENYLBICICLO(4,4,0)3-DECENONE				
SYNONYMS	VALENCENE				
PLANT OF ORIGIN	SUGARS FERMENTATION				
PART OF THE PLANT	C15 H24				
FORMULA	204,00				
MOLECULAR WEIGHT	4630-07-3				
CAS					
EINECS	225-047-6				
FEMA	4838				
TARIFF NUMBER	3302909000				
KOSHER CERTIFICATE	AVAILABLE ON REQUEST				
FOOD GRADE CERTIFICATE	AVAILABLE ON REQUEST				
REACH REGISTRATION NO.	All the ingredients of the mixture have been registered or they are exempt from registration.				



SPECIFICATIONS

ASPECT AT 20°C	CLEAR MOBILE LIQUID	
COLOUR	COLORLESS TO PALE YELLOW	
ODOUR	STRONG, ORANGE, JUICY, HERBAL	
TASTE	SWEET ORANGE, FRESH, FUITY	
DENSITY AT 20°C (g / ml)	0,880	- 0,940
DENSITY 25/25	-	
REFRACTIVE INDEX nD20	1,4900	- 1,5200
REFRACTIVE INDEX nD25	-	
OPTICAL ROTATION (°)	/	
BOILING POINT (°C)	270-274°C (1 atm)	
MELTING POINT (°C)	-	
FLASH POINT (°C)	100,00	
ASSAY (% GC)	> 75	
ACID VALUE (mg KOH/g)	-	
SOLUBILITY	INSOLUBLE IN WATER	
VAPOUR PRESSURE	<0,013 kPa (20°C)	
OTHER SOLUBILITIES	SOLUBLE IN ETHANOL, TRIACETIN AND OILS	
OTHER TECHNICAL DATA	BLEND OF NATURAL FLAVORINGS WITH NATURAL VALENCENE OBTAINED BY BIOTECHNOLOGY.	

STABILITY AND STORAGE

KEEP IN TIGHTLY CLOSED CONTAINER IN A COOL AND DRY PLACE, PROTECTED FROM LIGHT. WHEN STORED FOR MORE THAN 24 MONTHS, QUALITY SHOULD BE CHECKED BEFORE USE.
PURGE HEADSPACE WITH NITROGEN. REFRIGERATED <8°C. SENSITIVE TO AIR, LIGHT, HEAT AND HUMIDITY.

WE BELIEVE THE ABOVE INFORMATION TO BE CORRECT BUT WE DO NOT PRESENT IT AS ALL INCLUSIVE AND AS SUCH SHOULD BE USED AS A GUIDE.
IT IS THE SOLE RESPONSIBILITY OF THE RECEIVER OF OUR PRODUCT TO COMPLY WITH EXISTING REGULATIONS AND INSTRUCTIONS.

THIS PRODUCT HAS NOT BEEN FILTERED DUE TO TECHNICAL REASONS. WE RECOMMEND NOT TO USE IT UNLESS FILTERED WHEN USED AS A RAW MATERIAL IN FOOD INTENDED FOR FINAL CONSUMERS.