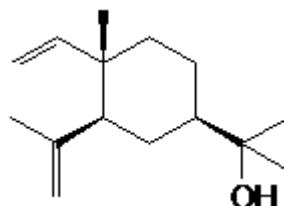


## SPECIFICATION SHEET

<b>VERSION</b>	8,00	<b>VERSION DATE</b>	19/09/22	<b>PRINT DATE</b>	29/04/24
<b>PRODUCT</b>	ELEMOL OIL NATURAL (EX-ELEMI)				
<b>APPLICATIONS</b>	Industrial raw material not intended for direct use.				
<b>IUPAC NAME</b>	ELEMOL				
<b>SYNONYMS</b>					
<b>PLANT OF ORIGIN</b>	Canarium commune/Elemi gum				
<b>PART OF THE PLANT</b>	RECTIFICATION OF ELEMI OIL				
<b>FORMULA</b>	C <sub>15</sub> H <sub>26</sub> O				
<b>MOLECULAR WEIGHT</b>	222,00				
<b>CAS</b>	97675-63-3				
<b>CAS 2</b>	639-99-6				
<b>EINECS</b>	307-636-0				
<b>EINECS 2</b>	211-360-5				
<b>FEMA</b>	2408				
<b>TARIFF NUMBER</b>	3301294900				



**REACH REGISTRATION NO.** 01-2120770948-35

## SPECIFICATIONS

<b>ASPECT AT 20°C</b>	MOBILE LIQUID - SOLID	
<b>COLOUR</b>	YELLOW-ORANGE	
<b>ODOUR</b>	SPICY, CITRIUS, WOODY, RESINOUS	
<b>TASTE</b>		
<b>DENSITY AT 20°C (g / ml)</b>	0,950	- 0,975
<b>DENSITY 25/25</b>	-	
<b>REFRACTIVE INDEX n<sub>D</sub>20</b>	1,4950	- 1,5050
<b>REFRACTIVE INDEX n<sub>D</sub>25</b>	-	
<b>OPTICAL ROTATION (°)</b>	/ 15,00	
<b>BOILING POINT (°C)</b>		
<b>MELTING POINT (°C)</b>		
<b>FLASH POINT (°C)</b>	80,00	
<b>ASSAY (% GC)</b>	ELEMOL, USUAL VALUES 40-60%	
<b>ACID VALUE (mg KOH/g)</b>	-	
<b>SOLUBILITY</b>		
<b>VAPOUR PRESSURE</b>	NOT DETERMINED	
<b>OTHER SOLUBILITIES</b>	SOLUBLE IN ETHANOL	

## OTHER TECHNICAL DATA

## STABILITY AND STORAGE

KEEP IN TIGHTLY CLOSED CONTAINER IN A COOL AND DRY PLACE, PROTECTED FROM LIGHT. WHEN STORED FOR MORE THAN 12 MONTHS, QUALITY SHOULD BE CHECKED BEFORE USE.

WE BELIEVE THE ABOVE INFORMATION TO BE CORRECT BUT WE DO NOT PRESENT IT AS ALL INCLUSIVE AND AS SUCH SHOULD BE USED AS A GUIDE. IT IS THE SOLE RESPONSIBILITY OF THE RECEIVER OF OUR PRODUCT TO COMPLY WITH EXISTING REGULATIONS AND INSTRUCTIONS.

THIS PRODUCT HAS NOT BEEN FILTERED DUE TO TECHNICAL REASONS. WE RECOMMEND NOT TO USE IT UNLESS FILTERED WHEN USED AS A RAW MATERIAL IN FOOD INTENDED FOR FINAL CONSUMERS.