

SPECIFICATION SHEET

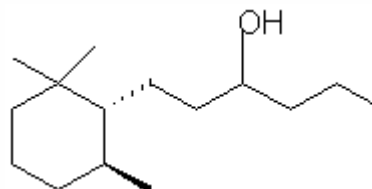
VERSION 1,00 **VERSION DATE** 28/01/22 **PRINT DATE** 17/05/24

PRODUCT NORLIMWOOD
APPLICATIONS Industrial raw material not intended for direct use.
IUPAC NAME 2,2,6-TRIMETIL-ALFA-PROPIL-CICLOHEXANEPROPANOL
SYNONYMS 1-(2,2,6-TRIMETHYLCYCLOHEXYL)-HEXAN-3-OL, KARMAWOOD, NORLIMBANOL

FORMULA C15 H30 O
MOLECULAR WEIGHT 226,00
CAS 70788-30-6

EINECS 274-892-7

FEMA -
TARIFF NUMBER 2906190090



REACH REGISTRATION NO. 01-2120085416-52

SPECIFICATIONS

ASPECT AT 20°C CLEAR LIQUID / SOLID
COLOUR COLORLESS TO PALE YELLOW
ODOUR WOODY, AMBER, ANIMAL, PATCHOULI
TASTE
DENSITY AT 20°C (g / ml) 0,893 - 0,897
DENSITY 25/25 0,892 - 0,896
REFRACTIVE INDEX nD20 1,4690 - 1,4730
REFRACTIVE INDEX nD25 -
OPTICAL ROTATION (°) /
BOILING POINT (°C) 292°C (760 mm Hg)
MELTING POINT (°C) -
FLASH POINT (°C) 145,00
ASSAY (% GC) SUM OF ISOMERS > 97%
ACID VALUE (mg KOH/g) < 1
SOLUBILITY INSOLUBLE IN WATER
VAPOUR PRESSURE 0,5 Pa (20°C)
OTHER SOLUBILITIES SOLUBLE IN ETHANOL

OTHER TECHNICAL DATA ISOMERS RATIO >90:<10

STABILITY AND STORAGE

KEEP IN TIGHTLY CLOSED CONTAINER IN A COOL AND DRY PLACE, PROTECTED FROM LIGHT. WHEN STORED FOR MORE THAN 24 MONTHS, QUALITY SHOULD BE CHECKED BEFORE USE.
 IT CONTAINS 0,001% OF ALPHA-TOCOPHEROL.

WE BELIEVE THE ABOVE INFORMATION TO BE CORRECT BUT WE DO NOT PRESENT IT AS ALL INCLUSIVE AND AS SUCH SHOULD BE USED AS A GUIDE.
 IT IS THE SOLE RESPONSIBILITY OF THE RECEIVER OF OUR PRODUCT TO COMPLY WITH EXISTING REGULATIONS AND INSTRUCTIONS.