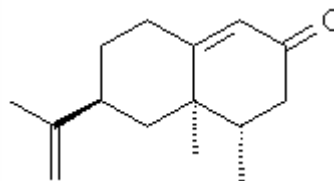


SPECIFICATION SHEET

VERSION	1,00	VERSION DATE	19/09/22	PRINT DATE	03/05/24
PRODUCT	NOOTKATONE NATURAL 70-80% IFF				
APPLICATIONS	Industrial raw material not intended for direct use.				
IUPAC NAME	5,6-DIMETHYL-8-ISO-PROPENYLBICYCLO-[4.4.0]-1-DECEN-3-ONE				
SYNONYMS					
PLANT OF ORIGIN	Citrus sinensis				
PART OF THE PLANT	FRUIT				
FORMULA	C ₁₅ H ₂₂ O				
MOLECULAR WEIGHT	218,34				
CAS	4674-50-4				
EINECS	225-124-4				
FEMA	3166				
TARIFF NUMBER	2914290090				
KOSHER CERTIFICATE	AVAILABLE ON REQUEST				



REACH REGISTRATION NO. Exempt from registration (according to article 2.5 of REACH)

SPECIFICATIONS

ASPECT AT 20°C	CLEAR MOBILE LIQUID/SOLID	
COLOUR	YELLOW	
ODOUR	GRAPEFRUIT, CITRUS, WOODY	
TASTE		
DENSITY AT 20°C (g / ml)	0,970	- 1,010
DENSITY 25/25	-	
REFRACTIVE INDEX n_D20	1,5140	- 1,5280
REFRACTIVE INDEX n_D25	-	
OPTICAL ROTATION (°)	110,00	/ 155,00
BOILING POINT (°C)	140°C (0,5-1,0 mm)	
MELTING POINT (°C)	-	
FLASH POINT (°C)	110,00	
ASSAY (% GC)	> 70	
ACID VALUE (mg KOH/g)	-	
SOLUBILITY	INSOLUBLE IN WATER	
VAPOUR PRESSURE	NOT DETERMINED	
OTHER SOLUBILITIES	SOLUBLE IN ETHANOL	

OTHER TECHNICAL DATA DO NOT HEAT ABOVE 50°C.

STABILITY AND STORAGE

KEEP IN TIGHTLY CLOSED CONTAINER IN A COOL AND DRY PLACE, PROTECTED FROM LIGHT. WHEN STORED FOR MORE THAN 24 MONTHS, QUALITY SHOULD BE CHECKED BEFORE USE.
MELT AND MIX BEFORE SAMPLING OR USE. KEEP REFRIGERATED. PURGE HEADSPACE WITH NITROGEN.

WE BELIEVE THE ABOVE INFORMATION TO BE CORRECT BUT WE DO NOT PRESENT IT AS ALL INCLUSIVE AND AS SUCH SHOULD BE USED AS A GUIDE.
IT IS THE SOLE RESPONSIBILITY OF THE RECEIVER OF OUR PRODUCT TO COMPLY WITH EXISTING REGULATIONS AND INSTRUCTIONS.

THIS PRODUCT HAS NOT BEEN FILTERED DUE TO TECHNICAL REASONS. WE RECOMMEND NOT TO USE IT UNLESS FILTERED WHEN USED AS A RAW MATERIAL IN FOOD INTENDED FOR FINAL CONSUMERS.