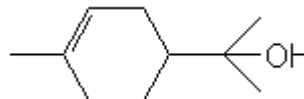


SPECIFICATION SHEET

VERSION 2,00 **VERSION DATE** 26/05/21 **PRINT DATE** 25/04/24

PRODUCT TERPINEOL ALPHA
APPLICATIONS Industrial raw material not intended for direct use.
IUPAC NAME PARA-MENTH-1-EN-8-OL
SYNONYMS

FORMULA C10 H18 O
MOLECULAR WEIGHT 154,00
CAS 8000-41-7
CAS 2 98-55-5
EINECS 232-268-1
EINECS 2 202-680-6
FEMA 3045
TARIFF NUMBER 2906190090



REACH REGISTRATION NO. On request. REACH and non-REACH material available for this product.

SPECIFICATIONS

ASPECT AT 20°C	CLEAR MOBILE LIQUID/SOLID
COLOUR	COLORLESS
ODOUR	FLORAL, LILAC
TASTE	
DENSITY AT 20°C (g / ml)	0,932 - 0,938
DENSITY 25/25	-
REFRACTIVE INDEX nD20	1,4800 - 1,4850
REFRACTIVE INDEX nD25	-
OPTICAL ROTATION (°)	/
BOILING POINT (°C)	217°C
MELTING POINT (°C)	-
FLASH POINT (°C)	91,00
ASSAY (% GC)	ALPHA+GAMMA>91%; BETA<3%; TERPINE HYDRATE<0,3%
ACID VALUE (mg KOH/g)	
SOLUBILITY	SOLUBILITY IN WATER:370 mg/L APPROX. (25°C, CALC.)
VAPOUR PRESSURE	0,1 mm Hg (20°C, CALCULATED)
OTHER SOLUBILITIES	SOLUBLE IN ETHANOL

OTHER TECHNICAL DATA

STABILITY AND STORAGE

KEEP IN TIGHTLY CLOSED CONTAINER IN A COOL AND DRY PLACE, PROTECTED FROM LIGHT. WHEN STORED FOR MORE THAN 24 MONTHS, QUALITY SHOULD BE CHECKED BEFORE USE.

WE BELIEVE THE ABOVE INFORMATION TO BE CORRECT BUT WE DO NOT PRESENT IT AS ALL INCLUSIVE AND AS SUCH SHOULD BE USED AS A GUIDE. IT IS THE SOLE RESPONSIBILITY OF THE RECEIVER OF OUR PRODUCT TO COMPLY WITH EXISTING REGULATIONS AND INSTRUCTIONS.

THIS PRODUCT HAS NOT BEEN FILTERED DUE TO TECHNICAL REASONS. WE RECOMMEND NOT TO USE IT UNLESS FILTERED WHEN USED AS A RAW MATERIAL IN FOOD INTENDED FOR FINAL CONSUMERS.