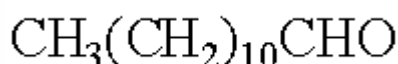


## SPECIFICATION SHEET

<b>VERSION</b>	3,00	<b>VERSION DATE</b>	03/02/23	<b>PRINT DATE</b>	03/05/24
<b>PRODUCT</b>	ALDEHYDE C-12 LAURIC NATURAL				
<b>APPLICATIONS</b>	Industrial raw material not intended for direct use.				
<b>IUPAC NAME</b>	DODECANAL				
<b>SYNONYMS</b>	DODECANAL, DODECILIC ALDEHYDE				
<b>PLANT OF ORIGIN</b>					
<b>PART OF THE PLANT</b>					
<b>FORMULA</b>	C <sub>12</sub> H <sub>24</sub> O				
<b>MOLECULAR WEIGHT</b>	184,32				
<b>CAS</b>	112-54-9				
<b>EINECS</b>	203-983-6				
<b>FEMA</b>	2615				
<b>TARIFF NUMBER</b>	2912190090				



**REACH REGISTRATION NO.** Not available. Substance lawfully placed in the EU market before 1 June 2018.

## SPECIFICATIONS

<b>ASPECT AT 20°C</b>	CLEAR MOBILE LIQUID/SOLID	
<b>COLOUR</b>	COLORLESS TO PALE YELLOW	
<b>ODOUR</b>	FATTY,CITRUS,GREEN,HERBAL,FLORAL	
<b>TASTE</b>	CITRUS,ORANGE,MANDARIN,SOAPY,WAXY	
<b>DENSITY AT 20°C (g / ml)</b>	0,827	- 0,839
<b>DENSITY 25/25</b>	0,826	- 0,836
<b>REFRACTIVE INDEX n<sub>D</sub>20</b>	1,4330	- 1,4390
<b>REFRACTIVE INDEX n<sub>D</sub>25</b>	-	
<b>OPTICAL ROTATION (°)</b>	/	
<b>BOILING POINT (°C)</b>	249	
<b>MELTING POINT (°C)</b>	CA. 8-13	
<b>FLASH POINT (°C)</b>	101,00	
<b>ASSAY (% GC)</b>	>97	
<b>ACID VALUE (mg KOH/g)</b>	<10	
<b>SOLUBILITY</b>	INSOLUBLE IN WATER	
<b>VAPOUR PRESSURE</b>	< 300 hPa (50°C)	
<b>OTHER SOLUBILITIES</b>	SOLUBLE IN ETHANOL	

**OTHER TECHNICAL DATA** LOW TEMPERATURES MAKE EASIER THE POLIMERIZATION OF THE PRODUCT WHICH GIVES SOLUBILITY PROBLEMS. IF IT MELTS AT HIGHER TEMPERATURES THAN SPECIFIED, IT HAS POLIMERIZED. QUALITY OF THE PRODUCT HAS TO BE CONTROLLED BEFORE EVERY USE OF THE PRODUCT.

## STABILITY AND STORAGE

KEEP IN TIGHTLY CLOSED CONTAINER IN A COOL AND DRY PLACE, PROTECTED FROM LIGHT. WHEN STORED FOR MORE THAN 9 MONTHS, QUALITY SHOULD BE CHECKED BEFORE USE.  
IT DOES NOT CONTAIN ADDITIVES. KEEP AT 15°C, PURGE HEADSPACE WITH NITROGEN.

WE BELIEVE THE ABOVE INFORMATION TO BE CORRECT BUT WE DO NOT PRESENT IT AS ALL INCLUSIVE AND AS SUCH SHOULD BE USED AS A GUIDE.  
IT IS THE SOLE RESPONSIBILITY OF THE RECEIVER OF OUR PRODUCT TO COMPLY WITH EXISTING REGULATIONS AND INSTRUCTIONS.