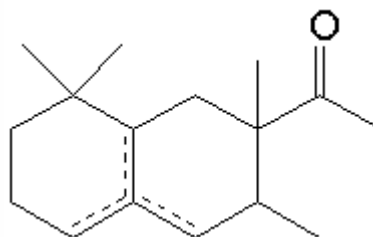


## SPECIFICATION SHEET

<b>VERSION</b>	2,00	<b>VERSION DATE</b>	18/11/21	<b>PRINT DATE</b>	19/04/24
<b>PRODUCT</b>	TIMBERSILK IFF				
<b>APPLICATIONS</b>	Industrial raw material not intended for direct use.				
<b>IUPAC NAME</b>	1-(1,2,3,4,5,6,7,8-OCTAHYDRO-2,3,8-TETRAMETHYL-2-NAPHTHALENYL)-ETHAN-1-ONE				
<b>SYNONYMS</b>					
<b>FORMULA</b>	C16 H26 O				
<b>MOLECULAR WEIGHT</b>	234,40				
<b>CAS</b>	54464-57-2				
<b>CAS 2</b>	68155-66-8				
<b>EINECS</b>	259-174-3				
<b>EINECS 2</b>	268-978-3				
<b>TARIFF NUMBER</b>	3302909000				



**REACH REGISTRATION NO.** All the ingredients of the mixture have been registered or they are exempt from registration.

## SPECIFICATIONS

<b>ASPECT AT 20°C</b>	SLIGHT VISCOUS CLEAR LIQUID	
<b>COLOUR</b>	PALE YELLOW	
<b>ODOUR</b>	SMOOTH,WARM,WOODY,AMBER,SILKY	
<b>TASTE</b>		
<b>DENSITY AT 20°C (g / ml)</b>	0,962	- 0,968
<b>DENSITY 25/25</b>	0,961	- 0,967
<b>REFRACTIVE INDEX nD20</b>	1,4970	- 1,5010
<b>REFRACTIVE INDEX nD25</b>		-
<b>OPTICAL ROTATION (°)</b>		/
<b>BOILING POINT (°C)</b>	290°C (typ. anal.)	
<b>MELTING POINT (°C)</b>	-	
<b>FLASH POINT (°C)</b>	111,00	
<b>ASSAY (% GC)</b>	BETA 30-45; ALPHA 18-26; DELTA 5,5-7,5; SECTION>89	
<b>ACID VALUE (mg KOH/g)</b>		
<b>SOLUBILITY</b>	INSOLUBLE IN WATER	
<b>VAPOUR PRESSURE</b>	NOT DETERMINED	
<b>OTHER SOLUBILITIES</b>	SOLUBLE IN ETHANOL	

**OTHER TECHNICAL DATA** CONTINUATION OF SPECIFICATIONS: GAMMA 13-20%; ISOPRECYCLEMONE <5%. SYNONIM FOR BETA ISOMER: ISOCYCLEMONE E.

## STABILITY AND STORAGE

KEEP IN TIGHTLY CLOSED CONTAINER IN A COOL AND DRY PLACE, PROTECTED FROM LIGHT. WHEN STORED FOR MORE THAN 24 MONTHS, QUALITY SHOULD BE CHECKED BEFORE USE.  
STABILIZED WITH 0,1% TOCOPHEROL. DO NOT REFRIGERATE OR FREEZE.

WE BELIEVE THE ABOVE INFORMATION TO BE CORRECT BUT WE DO NOT PRESENT IT AS ALL INCLUSIVE AND AS SUCH SHOULD BE USED AS A GUIDE.  
IT IS THE SOLE RESPONSIBILITY OF THE RECEIVER OF OUR PRODUCT TO COMPLY WITH EXISTING REGULATIONS AND INSTRUCTIONS.