

SPECIFICATION SHEET

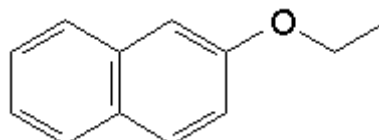
VERSION 4,00 **VERSION DATE** 12/06/20 **PRINT DATE** 18/05/24

PRODUCT NEROLIN BROMELIA
APPLICATIONS Industrial raw material not intended for direct use.
IUPAC NAME 2-ETHOXYNAPHTHALENE
SYNONYMS BETA-NAPHTYL ETHYL ETHER

FORMULA C12 H12 O
MOLECULAR WEIGHT 172,00
CAS 93-18-5

EINECS 202-226-7

FEMA 2768
TARIFF NUMBER 2909309090



REACH REGISTRATION NO. 01-2120176465-49

SPECIFICATIONS

ASPECT AT 20°C	CRYSTALLINE SOLID
COLOUR	WHITE
ODOUR	MILD, LONG-LASTING, FRUITY, FLOWER
TASTE	SWEET, SUGGEST STRAWBERRY (DILUTED)
DENSITY AT 20°C (g / ml)	-
DENSITY 25/25	-
REFRACTIVE INDEX nD20	-
REFRACTIVE INDEX nD25	-
OPTICAL ROTATION (°)	/
BOILING POINT (°C)	282
MELTING POINT (°C)	35 - 38
FLASH POINT (°C)	101,00
ASSAY (% GC)	> 99
ACID VALUE (mg KOH/g)	-
SOLUBILITY	INSOLUBLE IN WATER. 1:5 IN ETHANOL 95°
VAPOUR PRESSURE	NOT DETERMINED
OTHER SOLUBILITIES	SOLUBLE IN ETHANOL

OTHER TECHNICAL DATA

STABILITY AND STORAGE

KEEP IN TIGHTLY CLOSED CONTAINER IN A COOL AND DRY PLACE, PROTECTED FROM LIGHT. WHEN STORED FOR MORE THAN 24 MONTHS, QUALITY SHOULD BE CHECKED BEFORE USE.
KEEP AWAY FROM HEAT SOURCES TO AVOID PRODUCT MELTING

WE BELIEVE THE ABOVE INFORMATION TO BE CORRECT BUT WE DO NOT PRESENT IT AS ALL INCLUSIVE AND AS SUCH SHOULD BE USED AS A GUIDE.
IT IS THE SOLE RESPONSIBILITY OF THE RECEIVER OF OUR PRODUCT TO COMPLY WITH EXISTING REGULATIONS AND INSTRUCTIONS.

THIS PRODUCT HAS NOT BEEN FILTERED DUE TO TECHNICAL REASONS. WE RECOMMEND NOT TO USE IT UNLESS FILTERED WHEN USED AS A RAW MATERIAL IN FOOD INTENDED FOR FINAL CONSUMERS.