

## SPECIFICATION SHEET

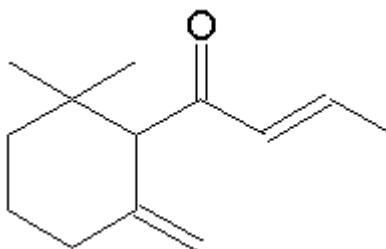
**VERSION** 1,00 **VERSION DATE** 19/09/22 **PRINT DATE** 15/05/24

**PRODUCT** DAMASCONE GAMMA FIRMENICH 944580  
**APPLICATIONS** Industrial raw material not intended for direct use.  
**IUPAC NAME** 2-BUTEN-1-ONE,1-(2,2-DIMETHYL-6-METHYLENOCYCLOHEXYL)-  
**SYNONYMS**

**FORMULA** C13 H20 O  
**MOLECULAR WEIGHT** 192,00  
**CAS** 35087-49-1

**EINECS** 481-910-9

**TARIFF NUMBER** 2914290090



**REACH REGISTRATION NO.** 01-0000020133-85

## SPECIFICATIONS

|                                 |  |
|---------------------------------|--|
| <b>ASPECT AT 20°C</b>           | CLEAR MOBILE LIQUID                        |
| <b>COLOUR</b>                   | COLORLESS TO PALE YELLOW                   |
| <b>ODOUR</b>                    | FLORAL, ROSE, GREEN, FRUITY, THUJONE       |
| <b>TASTE</b>                    |  |
| <b>DENSITY AT 20°C (g / ml)</b> | 0,926 - 0,932                              |
| <b>DENSITY 25/25</b>            | -  |
| <b>REFRACTIVE INDEX nD20</b>    | 1,4930 - 1,4970                            |
| <b>REFRACTIVE INDEX nD25</b>    | -  |
| <b>OPTICAL ROTATION (°)</b>     | /  |
| <b>BOILING POINT (°C)</b>       |  |
| <b>MELTING POINT (°C)</b>       |  |
| <b>FLASH POINT (°C)</b>         | 98,00                                      |
| <b>ASSAY (% GC)</b>             | > 94%                                      |
| <b>ACID VALUE (mg KOH/g)</b>    | < 1  |
| <b>SOLUBILITY</b>               | INSOLUBLE IN WATER. SOLUBLE IN ETHANOL 95° |
| <b>VAPOUR PRESSURE</b>          | NOT DETERMINED                             |
| <b>OTHER SOLUBILITIES</b>       | SOLUBLE IN ETHANOL                         |

## OTHER TECHNICAL DATA

## STABILITY AND STORAGE

KEEP IN TIGHTLY CLOSED CONTAINER IN A COOL AND DRY PLACE, PROTECTED FROM LIGHT. WHEN STORED FOR MORE THAN 24 MONTHS, QUALITY SHOULD BE CHECKED BEFORE USE.  
 IT CONTAINS 0,05% OF BHT

WE BELIEVE THE ABOVE INFORMATION TO BE CORRECT BUT WE DO NOT PRESENT IT AS ALL INCLUSIVE AND AS SUCH SHOULD BE USED AS A GUIDE.  
 IT IS THE SOLE RESPONSIBILITY OF THE RECEIVER OF OUR PRODUCT TO COMPLY WITH EXISTING REGULATIONS AND INSTRUCTIONS.