

SPECIFICATION SHEET

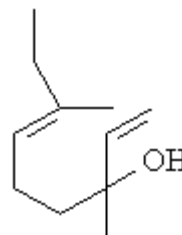
VERSION 3,00 **VERSION DATE** 19/09/22 **PRINT DATE** 26/04/24

PRODUCT ETHYL LINALOOL BASF
APPLICATIONS Industrial raw material not intended for direct use.
IUPAC NAME 3,7-DIMETHYL-1,6-NONADIEN-3-OL
SYNONYMS

FORMULA C₁₁ H₂₀ O
MOLECULAR WEIGHT 168,28
CAS 10339-55-6

EINECS 233-732-6

FEMA -
TARIFF NUMBER 2905299090



REACH REGISTRATION NO. 01-2119969272-32

SPECIFICATIONS

ASPECT AT 20°C	CLEAR MOBILE LIQUID
COLOUR	COLORLESS TO PALE YELLOW
ODOUR	FLORAL, FRESH, WOODY, ROSEWOOD
TASTE	
DENSITY AT 20°C (g / ml)	0,861 - 0,865
DENSITY 25/25	0,858 - 0,863
REFRACTIVE INDEX n_D20	1,4620 - 1,4660
REFRACTIVE INDEX n_D25	-
OPTICAL ROTATION (°)	/
BOILING POINT (°C)	74°C (4 mbar); 106°C (20 hPa)
MELTING POINT (°C)	CA. -50°C
FLASH POINT (°C)	86,00
ASSAY (% GC)	SUM ISOMERS > 97%. CIS: 30 - 45%, TRANS: 54 - 69%
ACID VALUE (mg KOH/g)	
SOLUBILITY	SOLUBILITY IN WATER: 563 mg/L
VAPOUR PRESSURE	CA.0,00267 kPa20°C;1,3 mbar59°
OTHER SOLUBILITIES	SOLUBLE IN ETHANOL

OTHER TECHNICAL DATA ARTIFICIAL SUBSTANCE, NOT REPORTED AS BEING FOUND IN NATURE. NOT ALLOWED TO BE USED IN FLAVORS.

STABILITY AND STORAGE

KEEP IN TIGHTLY CLOSED CONTAINER IN A COOL AND DRY PLACE, PROTECTED FROM LIGHT. WHEN STORED FOR MORE THAN 24 MONTHS, QUALITY SHOULD BE CHECKED BEFORE USE.
250 PPM OF ALPHA-TOCOPHEROL AS ANTIOXIDANT.

WE BELIEVE THE ABOVE INFORMATION TO BE CORRECT BUT WE DO NOT PRESENT IT AS ALL INCLUSIVE AND AS SUCH SHOULD BE USED AS A GUIDE.
IT IS THE SOLE RESPONSIBILITY OF THE RECEIVER OF OUR PRODUCT TO COMPLY WITH EXISTING REGULATIONS AND INSTRUCTIONS.