

SPECIFICATION SHEET

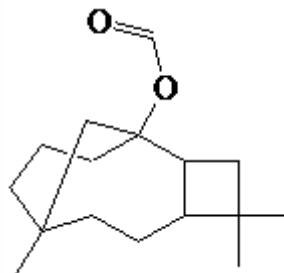
VERSION 2,00 **VERSION DATE** 19/09/22 **PRINT DATE** 15/05/24

PRODUCT CARYOPHYLLENE FORMATE 966 INDESSO
APPLICATIONS Industrial raw material not intended for direct use.
IUPAC NAME 4,4,8-TRIMETHYLTRICYCLO[6.3.1.0^{2,5}]DODECAN-1-YL FORMATE
SYNONYMS CARYOPHYLLENE FORMATE

FORMULA C₁₆ H₂₆ O₂
MOLECULAR WEIGHT 250,38
CAS 58096-46-1

EINECS 261-117-2

TARIFF NUMBER 2915130090



REACH REGISTRATION NO. Exempt from registration (imported/manufactured < 1 ton/year)

SPECIFICATIONS

ASPECT AT 20°C	CLEAR MOBILE LIQUID/SOLID	
COLOUR	COLORLESS TO YELLOW	
ODOUR	WOODY, AMBER, SWEET, SPICY	
TASTE		
DENSITY AT 20°C (g / ml)	0,988	- 1,023
DENSITY 25/25	0,985	- 1,020
REFRACTIVE INDEX n_D20	1,4900	- 1,5000
REFRACTIVE INDEX n_D25		-
OPTICAL ROTATION (°)		/
BOILING POINT (°C)	-	
MELTING POINT (°C)	-	
FLASH POINT (°C)	62,00	
ASSAY (% GC)	SUM > 40	
ACID VALUE (mg KOH/g)	-	
SOLUBILITY	INSOLUBLE IN WATER	
VAPOUR PRESSURE	NOT DETERMINED	
OTHER SOLUBILITIES	SOLUBLE IN ETHANOL	

OTHER TECHNICAL DATA

STABILITY AND STORAGE

KEEP IN TIGHTLY CLOSED CONTAINER IN A COOL AND DRY PLACE, PROTECTED FROM LIGHT. WHEN STORED FOR MORE THAN 24 MONTHS, QUALITY SHOULD BE CHECKED BEFORE USE.

WE BELIEVE THE ABOVE INFORMATION TO BE CORRECT BUT WE DO NOT PRESENT IT AS ALL INCLUSIVE AND AS SUCH SHOULD BE USED AS A GUIDE. IT IS THE SOLE RESPONSIBILITY OF THE RECEIVER OF OUR PRODUCT TO COMPLY WITH EXISTING REGULATIONS AND INSTRUCTIONS.