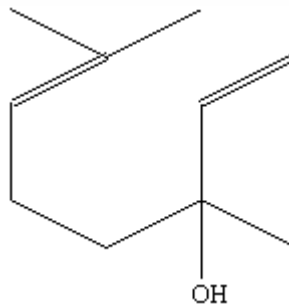


SPECIFICATION SHEET

VERSION	1,00	VERSION DATE	19/09/22	PRINT DATE	02/05/24
PRODUCT	LINALOOL NATURAL (EX HO)				
APPLICATIONS	Industrial raw material not intended for direct use.				
IUPAC NAME	(R)-(-)-3,7-DIMETHYL-1,6-OCTADIEN-3-OL				
SYNONYMS	SHIU, R-LINALOOL, L-LINALOOL				
PLANT OF ORIGIN	Cinnamomum camphora L.				
PART OF THE PLANT	WOOD AND LEAVES				
FORMULA	C ₁₀ H ₁₈ O				
MOLECULAR WEIGHT	154,00				
CAS	78-70-6				
CAS 2	126-91-0				
EINECS	201-134-4				
EINECS 2	204-811-2				
FEMA	2635				
TARIFF NUMBER	2905220010				
FOOD GRADE CERTIFICATE	AVAILABLE ON REQUEST				
REACH REGISTRATION NO.	On request. REACH and non-REACH material available for this product.				



SPECIFICATIONS

ASPECT AT 20°C	CLEAR MOBILE LIQUID	
COLOUR	COLORLESS TO PALE YELLOW	
ODOUR	LIGHT, FRESH, FLORAL-WOODY	
TASTE		
DENSITY AT 20°C (g / ml)	0,858	- 0,863
DENSITY 25/25	-	
REFRACTIVE INDEX n_D20	1,4600	- 1,4640
REFRACTIVE INDEX n_D25	-	
OPTICAL ROTATION (°)	-40,00	/ -10,00
BOILING POINT (°C)	198	
MELTING POINT (°C)	-	
FLASH POINT (°C)	75,00	
ASSAY (% GC)	L+D-LINALOOL > 98%; D-LINALOOL < 6%	
ACID VALUE (mg KOH/g)	-	
SOLUBILITY	1:4 v/v ETHANOL 60° - 1,45g/L IN WATER	
VAPOUR PRESSURE	0,3 mbar (20°C); 2 mbar (50°C)	
OTHER SOLUBILITIES	SOLUBLE IN ETHANOL	
OTHER TECHNICAL DATA	PEROXIDES < 20 mmol/l.	

STABILITY AND STORAGE

KEEP IN TIGHTLY CLOSED CONTAINER IN A COOL AND DRY PLACE, PROTECTED FROM LIGHT. WHEN STORED FOR MORE THAN 24 MONTHS, QUALITY SHOULD BE CHECKED BEFORE USE.
PURGE HEADSPACE WITH NITROGEN.

WE BELIEVE THE ABOVE INFORMATION TO BE CORRECT BUT WE DO NOT PRESENT IT AS ALL INCLUSIVE AND AS SUCH SHOULD BE USED AS A GUIDE.
IT IS THE SOLE RESPONSIBILITY OF THE RECEIVER OF OUR PRODUCT TO COMPLY WITH EXISTING REGULATIONS AND INSTRUCTIONS.

THIS PRODUCT HAS NOT BEEN FILTERED DUE TO TECHNICAL REASONS. WE RECOMMEND NOT TO USE IT UNLESS FILTERED WHEN USED AS A RAW MATERIAL IN FOOD INTENDED FOR FINAL CONSUMERS.