

SPECIFICATION SHEET

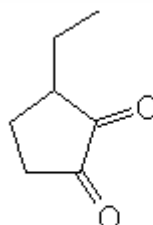
VERSION 2,00 **VERSION DATE** 14/06/22 **PRINT DATE** 15/05/24

PRODUCT ETHYL CYCLOPENTENOLONE
APPLICATIONS Industrial raw material not intended for direct use.
IUPAC NAME 3-ETHYL-2-CYCLOPENTEN-2-OL-1-ONE
SYNONYMS 3-ETHYLCYCLOPENTAN-1,2-DIONE

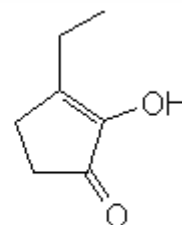
FORMULA C7 H10 O2
MOLECULAR WEIGHT 126,15
CAS 21835-01-8

EINECS 244-606-5

FEMA 3152
TARIFF NUMBER 2914409090



DIKETONE FORM



ENOL FORM

FOOD GRADE CERTIFICATE AVAILABLE ON REQUEST
REACH REGISTRATION NO. Exempt from registration (imported/manufactured < 1 ton/year)

SPECIFICATIONS

ASPECT AT 20°C POWDER
COLOUR PALE YELLOW TO BROWN ORANGE
ODOUR MAPLE, CARAMEL, COFFEE, SMOKE
TASTE
DENSITY AT 20°C (g / ml) -
DENSITY 25/25 -
REFRACTIVE INDEX nD20 -
REFRACTIVE INDEX nD25 -
OPTICAL ROTATION (°) /
BOILING POINT (°C) ca: 40 °C
MELTING POINT (°C) ca: 40 °C
FLASH POINT (°C) 101,00
ASSAY (% GC) > 97
ACID VALUE (mg KOH/g) -
SOLUBILITY INSOLUBLE IN WATER
VAPOUR PRESSURE 0,070660978 Pa
OTHER SOLUBILITIES SOLUBLE IN ETHANOL

OTHER TECHNICAL DATA IT IS RECOMMENDED TO USE COMPLETELY EVERY BAG ONCE OPENED. IF THIS IS NOT POSSIBLE, WE RECOMMEND TO DISSOLVE IT IN 50% PROPYLENEGLYCOL IN ORDER TO BE PRESERVED.

STABILITY AND STORAGE

KEEP IN TIGHTLY CLOSED CONTAINER IN A COOL AND DRY PLACE, PROTECTED FROM LIGHT. WHEN STORED FOR MORE THAN 9 MONTHS, QUALITY SHOULD BE CHECKED BEFORE USE.
 IT CONTAINS 200 ppm BHA. STORAGE CONDITIONS: COLD PLACE AT A TEMPERATURE <5°C

WE BELIEVE THE ABOVE INFORMATION TO BE CORRECT BUT WE DO NOT PRESENT IT AS ALL INCLUSIVE AND AS SUCH SHOULD BE USED AS A GUIDE.
 IT IS THE SOLE RESPONSIBILITY OF THE RECEIVER OF OUR PRODUCT TO COMPLY WITH EXISTING REGULATIONS AND INSTRUCTIONS.

THIS PRODUCT HAS NOT BEEN FILTERED DUE TO TECHNICAL REASONS. WE RECOMMEND NOT TO USE IT UNLESS FILTERED WHEN USED AS A RAW MATERIAL IN FOOD INTENDED FOR FINAL CONSUMERS.