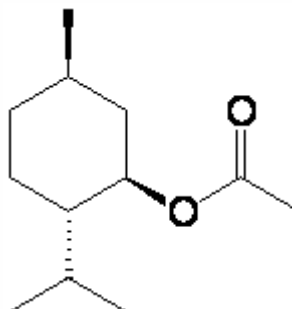


SPECIFICATION SHEET

VERSION 4,00 **VERSION DATE** 19/09/22 **PRINT DATE** 27/04/24

PRODUCT MENTHYL ACETATE
APPLICATIONS Industrial raw material not intended for direct use.
IUPAC NAME 5-METHYL-2-(1-METHYLETHYL)-CYCLOHEXANOL ACETATE
SYNONYMS L-PARA-MENTH-3-YL ACETATE, 2-ISOPROPYL-5-METHYL-CYCLOHEXYL ACETATE

FORMULA C12 H22 O2
MOLECULAR WEIGHT 198,00
CAS 2623-23-6
CAS 2 16409-45-3
EINECS 220-076-0
EINECS 2 240-459-6
FEMA 2668
TARIFF NUMBER 2915390090



FOOD GRADE CERTIFICATE AVAILABLE ON REQUEST
REACH REGISTRATION NO. 01-2120757182-56

SPECIFICATIONS

ASPECT AT 20°C CLEAR MOBILE LIQUID
COLOUR COLORLESS TO PALE YELLOW
ODOUR FRESH, MINTY, ROSE-LIKE
TASTE FRESH
DENSITY AT 20°C (g / ml) 0,921 - 0,931
DENSITY 25/25 -
REFRACTIVE INDEX nD20 1,4410 - 1,4500
REFRACTIVE INDEX nD25 -
OPTICAL ROTATION (°) -75,00 / -70,00
BOILING POINT (°C) 226 - 228
MELTING POINT (°C) -
FLASH POINT (°C) 92,00
ASSAY (% GC) > 98
ACID VALUE (mg KOH/g) < 2
SOLUBILITY INSOLUBLE IN WATER
VAPOUR PRESSURE NOT DETERMINED
OTHER SOLUBILITIES SOLUBLE IN ETHANOL

OTHER TECHNICAL DATA

STABILITY AND STORAGE

KEEP IN TIGHTLY CLOSED CONTAINER IN A COOL AND DRY PLACE, PROTECTED FROM LIGHT. WHEN STORED FOR MORE THAN 24 MONTHS, QUALITY SHOULD BE CHECKED BEFORE USE.

WE BELIEVE THE ABOVE INFORMATION TO BE CORRECT BUT WE DO NOT PRESENT IT AS ALL INCLUSIVE AND AS SUCH SHOULD BE USED AS A GUIDE. IT IS THE SOLE RESPONSIBILITY OF THE RECEIVER OF OUR PRODUCT TO COMPLY WITH EXISTING REGULATIONS AND INSTRUCTIONS.

THIS PRODUCT HAS NOT BEEN FILTERED DUE TO TECHNICAL REASONS. WE RECOMMEND NOT TO USE IT UNLESS FILTERED WHEN USED AS A RAW MATERIAL IN FOOD INTENDED FOR FINAL CONSUMERS.