

SPECIFICATION SHEET

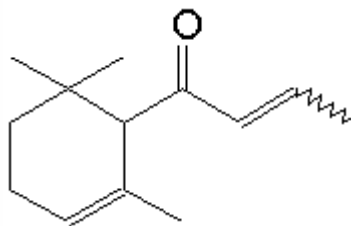
VERSION 1,00 **VERSION DATE** 29/03/12 **PRINT DATE** 15/05/24

PRODUCT DAMASCONA ALPHA
APPLICATIONS Industrial raw material not intended for direct use.
IUPAC NAME (E)-1-(2,6,6-TRIMETHYL-2-CYCLOHEXEN-1-YL)-2-BUTEN-1-ONE
SYNONYMS

FORMULA C₁₃ H₂₀ O
MOLECULAR WEIGHT 192,00
CAS 24720-09-0

EINECS 246-430-4

FEMA 3659
TARIFF NUMBER 2914290090



REACH REGISTRATION NO. On request. REACH and non-REACH material available for this product.

SPECIFICATIONS

ASPECT AT 20°C	CLEAR MOBILE LIQUID
COLOUR	COLORLESS TO PALE YELLOW
ODOUR	DIFFUSIVE, FLORAL, ROSY, FRUITY, APPLE
TASTE	
DENSITY AT 20°C (g / ml)	0,932 - 0,938
DENSITY 25/25	0,929 - 0,935
REFRACTIVE INDEX n_D20	1,4940 - 1,4980
REFRACTIVE INDEX n_D25	-
OPTICAL ROTATION (°)	/
BOILING POINT (°C)	250 °C (101325 Pa)
MELTING POINT (°C)	4 °C
FLASH POINT (°C)	94,00
ASSAY (% GC)	CIS 1-10%; TRANS >90%; SUM OF ISOMERS > 95%
ACID VALUE (mg KOH/g)	< 1
SOLUBILITY	INSOLUBLE IN WATER
VAPOUR PRESSURE	3,2 Pa (25°C)
OTHER SOLUBILITIES	SOLUBLE IN ETHANOL

OTHER TECHNICAL DATA

STABILITY AND STORAGE

KEEP IN TIGHTLY CLOSED CONTAINER IN A COOL AND DRY PLACE, PROTECTED FROM LIGHT. WHEN STORED FOR MORE THAN 24 MONTHS, QUALITY SHOULD BE CHECKED BEFORE USE.
IT MAY BE STABILIZED WITH 0,05% DE ALPHA-TOCOPHEROL (VITAMIN E - E307)

WE BELIEVE THE ABOVE INFORMATION TO BE CORRECT BUT WE DO NOT PRESENT IT AS ALL INCLUSIVE AND AS SUCH SHOULD BE USED AS A GUIDE.
IT IS THE SOLE RESPONSIBILITY OF THE RECEIVER OF OUR PRODUCT TO COMPLY WITH EXISTING REGULATIONS AND INSTRUCTIONS.

THIS PRODUCT HAS NOT BEEN FILTERED DUE TO TECHNICAL REASONS. WE RECOMMEND NOT TO USE IT UNLESS FILTERED WHEN USED AS A RAW MATERIAL IN FOOD INTENDED FOR FINAL CONSUMERS.