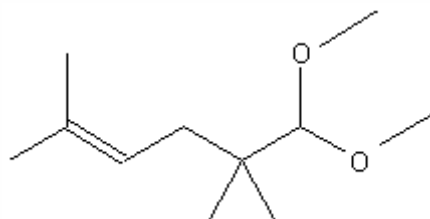


SPECIFICATION SHEET

VERSION	4,00	VERSION DATE	17/11/22	PRINT DATE	18/05/24
PRODUCT	METHYL PAMPLEMOUSSE				
APPLICATIONS	Industrial raw material not intended for direct use.				
IUPAC NAME	1,1-DIMETHOXY-2,2,5-TRIMETHYL-4-HEXENE				
SYNONYMS	METHYL PAMPLEMOUSSE, AMAROCIT, PAMPLEROM, POMELOCIT, GRAPEFRUIT ACETAL				
FORMULA	C11 H22 O2				
MOLECULAR WEIGHT	186,00				
CAS	67674-46-8				
EINECS	266-885-2				
TARIFF NUMBER	2911000000				
REACH REGISTRATION NO.	01-2120741268-52				



SPECIFICATIONS

ASPECT AT 20°C	CLEAR MOBILE LIQUID	
COLOUR	COLORLESS TO PALE YELLOW	
ODOUR	FRESH, CITRUS, GRAPEFRUIT PEEL-LIKE	
TASTE		
DENSITY AT 20°C (g / ml)	0,875	- 0,885
DENSITY 25/25		-
REFRACTIVE INDEX nD20	1,4350	- 1,4450
REFRACTIVE INDEX nD25		-
OPTICAL ROTATION (°)		/
BOILING POINT (°C)	195 (976 hPa)	
MELTING POINT (°C)	-70	
FLASH POINT (°C)	75,00	
ASSAY (% GC)	SUM OF TWO ISOMERS > 97	
ACID VALUE (mg KOH/g)	< 1	
SOLUBILITY	SOLUBILITY IN WATER: 0,42 g/L	
VAPOUR PRESSURE	0,46 hPa (20°C)	
OTHER SOLUBILITIES	SOLUBLE IN ETHANOL	

OTHER TECHNICAL DATA THIS SUBSTANCE DOES NOT SEEM TO OCCUR IN NATURE.

STABILITY AND STORAGE

KEEP IN TIGHTLY CLOSED CONTAINER IN A COOL AND DRY PLACE, PROTECTED FROM LIGHT. WHEN STORED FOR MORE THAN 24 MONTHS, QUALITY SHOULD BE CHECKED BEFORE USE.
IT MAY CONTAIN 0,05% OF ALPHA-TOCOPHEROL.

WE BELIEVE THE ABOVE INFORMATION TO BE CORRECT BUT WE DO NOT PRESENT IT AS ALL INCLUSIVE AND AS SUCH SHOULD BE USED AS A GUIDE.
IT IS THE SOLE RESPONSIBILITY OF THE RECEIVER OF OUR PRODUCT TO COMPLY WITH EXISTING REGULATIONS AND INSTRUCTIONS.