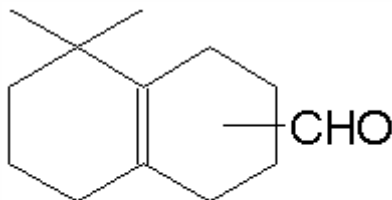


## SPECIFICATION SHEET

**VERSION** 4,00 **VERSION DATE** 01/06/23 **PRINT DATE** 30/04/24

**PRODUCT** CYCLEMONE A IFF  
**APPLICATIONS** Industrial raw material not intended for direct use.  
**IUPAC NAME** 1,2,3,4,5,6,7,8-OCTAHYDRO-8,8-DIMETHYL-2-NAPHTALDEHYDE  
**SYNONYMS** 5,5-DIMETHYL-OCTAHYDRO-2-NAPHTALENECARBOXALDEHYDE (ISOMERS)

**FORMULA** C13 H20 O  
**MOLECULAR WEIGHT** 192,00  
**CAS** 68991-97-9  
**CAS 2** 68991-96-8  
**EINECS** 273-661-8  
**EINECS 2** 273-660-2



+ ISOMERS

**TARIFF NUMBER** 2912290090  
**KOSHER CERTIFICATE** AVAILABLE ON REQUEST

**REACH REGISTRATION NO.** 01-2120769904-40

## SPECIFICATIONS

<b>ASPECT AT 20°C</b>	CLEAR MOBILE LIQUID	
<b>COLOUR</b>	COLORLESS TO PALE YELLOW	
<b>ODOUR</b>	OZONE,MARINE,FRUITY,WOOD,HERBAL	
<b>TASTE</b>		
<b>DENSITY AT 20°C (g / ml)</b>	0,986	- 0,991
<b>DENSITY 25/25</b>		-
<b>REFRACTIVE INDEX nD20</b>	1,5020	- 1,5080
<b>REFRACTIVE INDEX nD25</b>		-
<b>OPTICAL ROTATION (°)</b>		/
<b>BOILING POINT (°C)</b>	-	
<b>MELTING POINT (°C)</b>	-	
<b>FLASH POINT (°C)</b>	104,00	
<b>ASSAY (% GC)</b>	SEC.1<5;CYCLEMONE 82,5-92,5;TRICYCLEMONE<10;SUM>95	
<b>ACID VALUE (mg KOH/g)</b>	-	
<b>SOLUBILITY</b>	INSOLUBLE IN WATER	
<b>VAPOUR PRESSURE</b>	NOT APPLICABLE	
<b>OTHER SOLUBILITIES</b>	SOLUBLE IN ETHANOL	

## OTHER TECHNICAL DATA

## STABILITY AND STORAGE

KEEP IN TIGHTLY CLOSED CONTAINER IN A COOL AND DRY PLACE, PROTECTED FROM LIGHT. WHEN STORED FOR MORE THAN 12 MONTHS, QUALITY SHOULD BE CHECKED BEFORE USE.  
 KEEP BETWEEN 8 - 10°C. STABILIZED WITH A 0,35% BHT OR 0,4% TOCOPHEROL.PURGE HEADSPACE WITH NITROGEN.

WE BELIEVE THE ABOVE INFORMATION TO BE CORRECT BUT WE DO NOT PRESENT IT AS ALL INCLUSIVE AND AS SUCH SHOULD BE USED AS A GUIDE.  
 IT IS THE SOLE RESPONSIBILITY OF THE RECEIVER OF OUR PRODUCT TO COMPLY WITH EXISTING REGULATIONS AND INSTRUCTIONS.