

SPECIFICATION SHEET

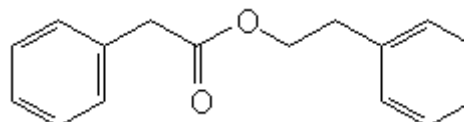
VERSION 2,00 **VERSION DATE** 16/01/22 **PRINT DATE** 12/05/24

PRODUCT PHENYL ETHYL PHENYLACETATE IFF
APPLICATIONS Industrial raw material not intended for direct use.
IUPAC NAME PHENETYL PHENYLACETATE
SYNONYMS 2-PHENYLETHYL ALPHA-TOLUATE

FORMULA C16 H16 O2
MOLECULAR WEIGHT 240,00
CAS 102-20-5

EINECS 203-013-1

FEMA 2866
TARIFF NUMBER 2916391000



REACH REGISTRATION NO. Not available. Substance lawfully placed in the EU market before 1 June 2018.

SPECIFICATIONS

ASPECT AT 20°C	CLEAR MOBILE LIQUID/WHITE CRYSTALS
COLOUR	COLORLESS TO PALE YELLOW
ODOUR	HEAVY, SWEET, FLORAL, BALSAMIC
TASTE	
DENSITY AT 20°C (g / ml)	1,078 - 1,086
DENSITY 25/25	-
REFRACTIVE INDEX nD20	1,5470 - 1,5520
REFRACTIVE INDEX nD25	-
OPTICAL ROTATION (°)	/
BOILING POINT (°C)	325°C (760 mmHg)
MELTING POINT (°C)	28°C
FLASH POINT (°C)	93,00
ASSAY (% GC)	> 98
ACID VALUE (mg KOH/g)	< 1
SOLUBILITY	INSOLUBLE IN WATER
VAPOUR PRESSURE	NOT DETERMINED
OTHER SOLUBILITIES	SOLUBLE IN ETHANOL

OTHER TECHNICAL DATA

STABILITY AND STORAGE

KEEP IN TIGHTLY CLOSED CONTAINER IN A COOL AND DRY PLACE, PROTECTED FROM LIGHT. WHEN STORED FOR MORE THAN 24 MONTHS, QUALITY SHOULD BE CHECKED BEFORE USE.

WE BELIEVE THE ABOVE INFORMATION TO BE CORRECT BUT WE DO NOT PRESENT IT AS ALL INCLUSIVE AND AS SUCH SHOULD BE USED AS A GUIDE. IT IS THE SOLE RESPONSIBILITY OF THE RECEIVER OF OUR PRODUCT TO COMPLY WITH EXISTING REGULATIONS AND INSTRUCTIONS.