

## SPECIFICATION SHEET

**VERSION** 2,00 **VERSION DATE** 19/09/22 **PRINT DATE** 02/05/24

**PRODUCT** METHYL CYCLOPENTENOLONE HYDRATE NATURAL EU BESTALLY

**APPLICATIONS** Industrial raw material not intended for direct use.

**IUPAC NAME** 2-HYDROXY-3-METHYL-2-CYCLOPENTENONE MONOHYDRATE

**SYNONYMS** CYCLOTENE, CORYLONE, KETONAROME, MAPLE LACTONE

**PLANT OF ORIGIN**

**PART OF THE PLANT**

**FORMULA** C6 H8 O2 · H2O

**MOLECULAR WEIGHT** 130,15

**CAS** 80-71-7

**CAS 2** 765-70-8

**EINECS** 201-303-2

**EINECS 2** 212-154-8

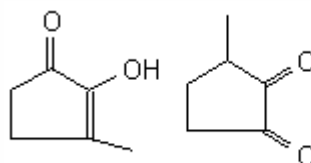
**FEMA** 2700

**TARIFF NUMBER** 2914409090

**KOSHER CERTIFICATE** AVAILABLE ON REQUEST

**FOOD GRADE CERTIFICATE** AVAILABLE ON REQUEST

**REACH REGISTRATION NO.** Exempt from registration (according to article 2.5 of REACH)



ENOL FORM DIKETONE FORM

## SPECIFICATIONS

<b>ASPECT AT 20°C</b>	CRYSTALLINE POWDER
<b>COLOUR</b>	WHITE - BEIGE
<b>ODOUR</b>	CARAMEL, SWEET, MAPLE, LICORICE, NUTTY
<b>TASTE</b>	SWEET
<b>DENSITY AT 20°C (g / ml)</b>	-
<b>DENSITY 25/25</b>	-
<b>REFRACTIVE INDEX nD20</b>	-
<b>REFRACTIVE INDEX nD25</b>	-
<b>OPTICAL ROTATION (°)</b>	/
<b>BOILING POINT (°C)</b>	-
<b>MELTING POINT (°C)</b>	70 - 78
<b>FLASH POINT (°C)</b>	110,00
<b>ASSAY (% GC)</b>	MCP HYDRATE >96%; MCP 82-86%; WATER 14-18%
<b>ACID VALUE (mg KOH/g)</b>	-
<b>SOLUBILITY</b>	SOLUBLE 1 g IN 72 mL OF WATER
<b>VAPOUR PRESSURE</b>	NOT DETERMINED
<b>OTHER SOLUBILITIES</b>	SOLUBLE 1 g IN 5 mL OF ETHANOL 90%. SOLUBLE IN PROPYLENGLYCOL
<b>OTHER TECHNICAL DATA</b>	HYDRATED QUALITY.

## STABILITY AND STORAGE

KEEP IN TIGHTLY CLOSED CONTAINER IN A COOL AND DRY PLACE, PROTECTED FROM LIGHT. WHEN STORED FOR MORE THAN 24 MONTHS, QUALITY SHOULD BE CHECKED BEFORE USE.

WE BELIEVE THE ABOVE INFORMATION TO BE CORRECT BUT WE DO NOT PRESENT IT AS ALL INCLUSIVE AND AS SUCH SHOULD BE USED AS A GUIDE. IT IS THE SOLE RESPONSIBILITY OF THE RECEIVER OF OUR PRODUCT TO COMPLY WITH EXISTING REGULATIONS AND INSTRUCTIONS.

THIS PRODUCT HAS NOT BEEN FILTERED DUE TO TECHNOLOGICAL REASONS. WE RECOMMEND NOT TO USE IT UNLESS FILTERED WHEN USED AS A RAW MATERIAL IN FOOD INTENDED FOR FINAL CONSUMERS.