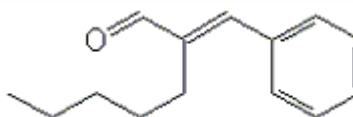


SPECIFICATION SHEET

VERSION	1,00	VERSION DATE	19/09/22	PRINT DATE	03/05/24
PRODUCT	AMYL CINNAMIC ALDEHYDE ALPHA NATURAL EU BESTALLY				
APPLICATIONS	Industrial raw material not intended for direct use.				
IUPAC NAME	AMYL CINNAMIC ALDEHYDE, ALPHA				
SYNONYMS					
PLANT OF ORIGIN					
PART OF THE PLANT					
FORMULA	C ₁₄ H ₁₈ O				
MOLECULAR WEIGHT	202,00				
CAS	122-40-7				
EINECS	204-541-5				
FEMA	2061				
TARIFF NUMBER	2912290090				
FOOD GRADE CERTIFICATE	AVAILABLE ON REQUEST				
REACH REGISTRATION NO.	Exempt from registration (imported/manufactured < 1 ton/year)				



SPECIFICATIONS

ASPECT AT 20°C	CLEAR MOBILE LIQUID	
COLOUR	YELLOW	
ODOUR	FLORAL WITH JASMIN CHARACTER, SPICY	
TASTE		
DENSITY AT 20°C (g / ml)	0,965	- 0,971
DENSITY 25/25	-	
REFRACTIVE INDEX n_D20	1,5540	- 1,5590
REFRACTIVE INDEX n_D25	-	
OPTICAL ROTATION (°)	/	
BOILING POINT (°C)	287-290°C	
MELTING POINT (°C)		
FLASH POINT (°C)	143,00	
ASSAY (% GC)	SUM ISOMERS >98%	
ACID VALUE (mg KOH/g)	< 5	
SOLUBILITY	8,6 g/l	
VAPOUR PRESSURE	0,1 mm Hg (50°C)	
OTHER SOLUBILITIES	1:5 in Ethanol 80°	

OTHER TECHNICAL DATA

STABILITY AND STORAGE

KEEP IN TIGHTLY CLOSED CONTAINER IN A COOL AND DRY PLACE, PROTECTED FROM LIGHT. WHEN STORED FOR MORE THAN 24 MONTHS, QUALITY SHOULD BE CHECKED BEFORE USE.
PURGE HEADSPACE WITH NITROGEN.

WE BELIEVE THE ABOVE INFORMATION TO BE CORRECT BUT WE DO NOT PRESENT IT AS ALL INCLUSIVE AND AS SUCH SHOULD BE USED AS A GUIDE.
IT IS THE SOLE RESPONSIBILITY OF THE RECEIVER OF OUR PRODUCT TO COMPLY WITH EXISTING REGULATIONS AND INSTRUCTIONS.

THIS PRODUCT HAS NOT BEEN FILTERED DUE TO TECHNICAL REASONS. WE RECOMMEND NOT TO USE IT UNLESS FILTERED WHEN USED AS A RAW MATERIAL IN FOOD INTENDED FOR FINAL CONSUMERS.