

SPECIFICATION SHEET

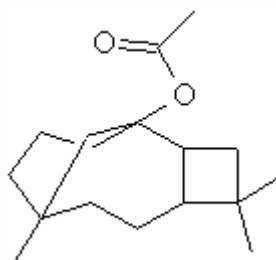
VERSION 1,00 **VERSION DATE** 16/02/24 **PRINT DATE** 02/05/24

PRODUCT CARYOPHYLLENE ACETATE
APPLICATIONS Industrial raw material not intended for direct use.
IUPAC NAME CARYOPHYLLENE ACETATE
SYNONYMS

FORMULA C17 H28 O2
MOLECULAR WEIGHT 264,41
CAS 57082-24-3

EINECS 260-555-1

FEMA -
TARIFF NUMBER 2915390090



REACH REGISTRATION NO. Exempt from registration (imported/manufactured < 1 ton/year)

SPECIFICATIONS

ASPECT AT 20°C	CLEAR MOBILE LIQUID	
COLOUR	PALE YELLOW TO YELLOW	
ODOUR	WOODY, SWEET, FRUITY, SLIGHTLY DRY	
TASTE		
DENSITY AT 20°C (g / ml)	0,982	- 0,996
DENSITY 25/25	0,980	- 0,994
REFRACTIVE INDEX nD20	1,4920	- 1,5020
REFRACTIVE INDEX nD25		-
OPTICAL ROTATION (°)		/
BOILING POINT (°C)	-	
MELTING POINT (°C)	-	
FLASH POINT (°C)	115,00	
ASSAY (% GC)	BETA-CARYOPHYLLENE ACETATE 50%	
ACID VALUE (mg KOH/g)	-	
SOLUBILITY	INSOLUBLE IN WATER	
VAPOUR PRESSURE	NOT DETERMINED	
OTHER SOLUBILITIES	SOLUBLE IN ETHANOL 80% 1:2	

OTHER TECHNICAL DATA

STABILITY AND STORAGE

KEEP IN TIGHTLY CLOSED CONTAINER IN A COOL AND DRY PLACE, PROTECTED FROM LIGHT. WHEN STORED FOR MORE THAN 24 MONTHS, QUALITY SHOULD BE CHECKED BEFORE USE.

WE BELIEVE THE ABOVE INFORMATION TO BE CORRECT BUT WE DO NOT PRESENT IT AS ALL INCLUSIVE AND AS SUCH SHOULD BE USED AS A GUIDE. IT IS THE SOLE RESPONSIBILITY OF THE RECEIVER OF OUR PRODUCT TO COMPLY WITH EXISTING REGULATIONS AND INSTRUCTIONS.