

SPECIFICATION SHEET

VERSION 3,00 **VERSION DATE** 29/09/21 **PRINT DATE** 18/04/24

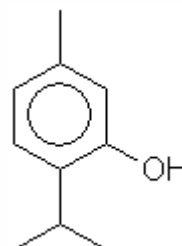
PRODUCT THYMOL NATURAL (EX-AJOWAN OIL)
APPLICATIONS Industrial raw material not intended for direct use.
IUPAC NAME 1-METHYL-3-HYDROXY-4-ISOPROPYLBENZENE
SYNONYMS 3-HIDROXY-1-METHYL-4-ISOPROPYLBENZENE, 2-ISOPROPYL-5-METHYLPHENOL

PLANT OF ORIGIN Trachyspermum ammi
PART OF THE PLANT SEEDS
FORMULA C10 H14 O
MOLECULAR WEIGHT 150,00
CAS 89-83-8

EINECS 201-944-8

FEMA 3066
TARIFF NUMBER 2907199090
KOSHER CERTIFICATE AVAILABLE ON REQUEST
FOOD GRADE CERTIFICATE AVAILABLE ON REQUEST

REACH REGISTRATION NO. On request. REACH and non-REACH material available for this product.



SPECIFICATIONS

ASPECT AT 20°C CRYSTALLINE SOLID
COLOUR COLORLESS TO WHITE OR YELLOW
ODOUR SPICY, WARM, THYME-LIKE, MEDICINAL
TASTE STRONG, SPICY, THYME LIKE, PHENOLIC
DENSITY AT 20°C (g / ml) -
DENSITY 25/25 -
REFRACTIVE INDEX nD20 -
REFRACTIVE INDEX nD25 -
OPTICAL ROTATION (°) /
BOILING POINT (°C) 233 (1013 mbar)
MELTING POINT (°C) 49 - 51
FLASH POINT (°C) 116,00
ASSAY (% GC) > 98
ACID VALUE (mg KOH/g) -
SOLUBILITY SOLUBILITY IN WATER: 1,4 g/L (40°C)
VAPOUR PRESSURE 2,5 mbar (50°C)
OTHER SOLUBILITIES SOLUBLE IN ETHANOL. 1:2 IN ETHANOL 80°

OTHER TECHNICAL DATA THIS PRODUCT CAN BE IN FORM OF BIG CRYSTALS WHICH CAN BE COLORLESS OR PALE YELLOW. IF THE CRYSTALS ARE BROKEN INTO LITTLE CRYSTALS, THEN THEY APPEAR AS WHITE.

STABILITY AND STORAGE

KEEP IN TIGHTLY CLOSED CONTAINER IN A COOL AND DRY PLACE, PROTECTED FROM LIGHT. WHEN STORED FOR MORE THAN 24 MONTHS, QUALITY SHOULD BE CHECKED BEFORE USE.
 IT IS RECOMMENDED TO STORAGE AT 2-4°C

WE BELIEVE THE ABOVE INFORMATION TO BE CORRECT BUT WE DO NOT PRESENT IT AS ALL INCLUSIVE AND AS SUCH SHOULD BE USED AS A GUIDE.
 IT IS THE SOLE RESPONSIBILITY OF THE RECEIVER OF OUR PRODUCT TO COMPLY WITH EXISTING REGULATIONS AND INSTRUCTIONS.

THIS PRODUCT HAS NOT BEEN FILTERED DUE TO TECHNICAL REASONS. WE RECOMMEND NOT TO USE IT UNLESS FILTERED WHEN USED AS A RAW MATERIAL IN FOOD INTENDED FOR FINAL CONSUMERS.