

SPECIFICATION SHEET

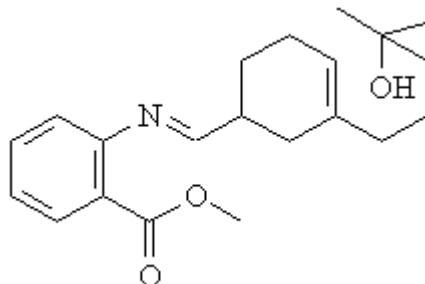
VERSION 2,00 **VERSION DATE** 19/09/22 **PRINT DATE** 25/04/24

PRODUCT SCHIFF BASE, LYRAL
APPLICATIONS Industrial raw material not intended for direct use.
IUPAC NAME SCHIFF BASE, LYRAL/METHYL ANTHRANILATE
SYNONYMS LYRAME SUPER; SCHIFF BASE, LYRAL/METHYL ANTHRANILATE; LYRANTION

FORMULA C21 H29 N O3
MOLECULAR WEIGHT 343,47
CAS 67634-12-2

EINECS 266-816-6

TARIFF NUMBER 2925290090



REACH REGISTRATION NO. Exempt from registration (imported/manufactured < 1 ton/year)

SPECIFICATIONS

ASPECT AT 20°C	VISCOUS LIQUID
COLOUR	YELLOW
ODOUR	FLORAL,FRUITY,MUGUET,ORANGE BLOSSOM
TASTE	
DENSITY AT 20°C (g / ml)	-
DENSITY 25/25	-
REFRACTIVE INDEX nD20	1,5770 - 1,5870
REFRACTIVE INDEX nD25	-
OPTICAL ROTATION (°)	/
BOILING POINT (°C)	-
MELTING POINT (°C)	
FLASH POINT (°C)	104,00
ASSAY (% GC)	-
ACID VALUE (mg KOH/g)	-
SOLUBILITY	INSOLUBLE IN WATER
VAPOUR PRESSURE	NOT DETERMINED
OTHER SOLUBILITIES	SOLUBLE IN ETHANOL

OTHER TECHNICAL DATA IT HAS FIXATIVE PROPERTIES. SYNONIM: Methyl 2-(((4-(4-hydroxy-4-methylpentyl) -3-cyclohexenyl)methylene)amino

STABILITY AND STORAGE

KEEP IN TIGHTLY CLOSED CONTAINER IN A COOL AND DRY PLACE, PROTECTED FROM LIGHT. WHEN STORED FOR MORE THAN 36 MONTHS, QUALITY SHOULD BE CHECKED BEFORE USE.
 IT IS NOT DILUTED IN SOLVENTS.

WE BELIEVE THE ABOVE INFORMATION TO BE CORRECT BUT WE DO NOT PRESENT IT AS ALL INCLUSIVE AND AS SUCH SHOULD BE USED AS A GUIDE.
 IT IS THE SOLE RESPONSIBILITY OF THE RECEIVER OF OUR PRODUCT TO COMPLY WITH EXISTING REGULATIONS AND INSTRUCTIONS.