

SPECIFICATION SHEET

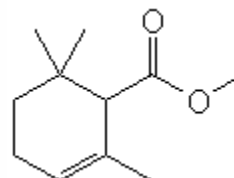
VERSION 1,00 **VERSION DATE** 19/09/22 **PRINT DATE** 28/04/24

PRODUCT METHYL CYCLOGERANIATE FIRMENICH 936915
APPLICATIONS Industrial raw material not intended for direct use.
IUPAC NAME METHYL 2,6,6-TRIMETHYL-2-CYCLOHEXENE-1-CARBOXYLATE
SYNONYMS

FORMULA C11 H18 O2
MOLECULAR WEIGHT 182,26
CAS 28043-10-9

EINECS 248-792-9

FEMA -
TARIFF NUMBER 2916200090



REACH REGISTRATION NO. 01-2120097033-60

SPECIFICATIONS

| | | |
|---------------------------------|-------------------------------|----------|
| ASPECT AT 20°C | CLEAR MOBILE LIQUID | |
| COLOUR | COLORLESS | |
| ODOUR | FLORAL,HERBAL,FRUITY,AROMATIC | |
| TASTE | | |
| DENSITY AT 20°C (g / ml) | 0,960 | - 0,966 |
| DENSITY 25/25 | | - |
| REFRACTIVE INDEX nD20 | 1,4600 | - 1,4640 |
| REFRACTIVE INDEX nD25 | | - |
| OPTICAL ROTATION (°) | | / |
| BOILING POINT (°C) | - | |
| MELTING POINT (°C) | - | |
| FLASH POINT (°C) | 77,00 | |
| ASSAY (% GC) | >90 | |
| ACID VALUE (mg KOH/g) | < 1 | |
| SOLUBILITY | INSOLUBLE IN WATER | |
| VAPOUR PRESSURE | NOT DETERMINED | |
| OTHER SOLUBILITIES | SOLUBLE IN ETHANOL | |

OTHER TECHNICAL DATA A COMPLEX VERY ELEGANT AND NATURAL NOTE RECALLING PARTS OF CAMOMILE, BASIL ABSOLUTE, GENTIAN, ABSINTH AND ROSEMARY. APPLICABLE IN FLORAL, HERBAL, GREEN, FRUITY AND CHYPRE NOTES. RECOMMENDED DOSAGE 0,5-5%. IT GIVES A RICH WARM BODY.

STABILITY AND STORAGE

KEEP IN TIGHTLY CLOSED CONTAINER IN A COOL AND DRY PLACE, PROTECTED FROM LIGHT. WHEN STORED FOR MORE THAN 24 MONTHS, QUALITY SHOULD BE CHECKED BEFORE USE.
 IT CONTAINS 0,05% OF BHT

WE BELIEVE THE ABOVE INFORMATION TO BE CORRECT BUT WE DO NOT PRESENT IT AS ALL INCLUSIVE AND AS SUCH SHOULD BE USED AS A GUIDE.
 IT IS THE SOLE RESPONSIBILITY OF THE RECEIVER OF OUR PRODUCT TO COMPLY WITH EXISTING REGULATIONS AND INSTRUCTIONS.